

SULPHUR SPRINGS, TEXAS

AL-5559 (FAA)

# RNAV (GPS) RWY 36

SULPHUR SPRINGS MUNI (SLR)

APP CRS	Rwy Idg	<b>5001</b>
<b>004°</b>	TDZE	<b>489</b>
	Apt Elev	<b>489</b>

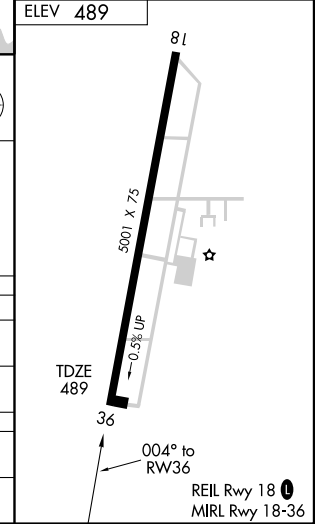
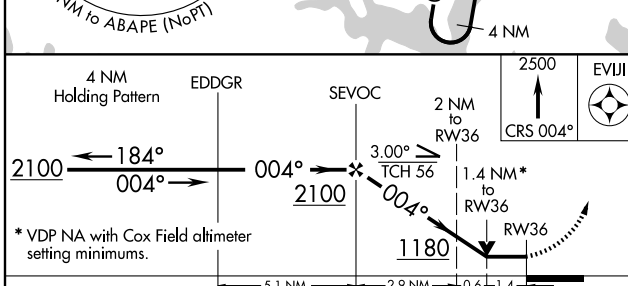
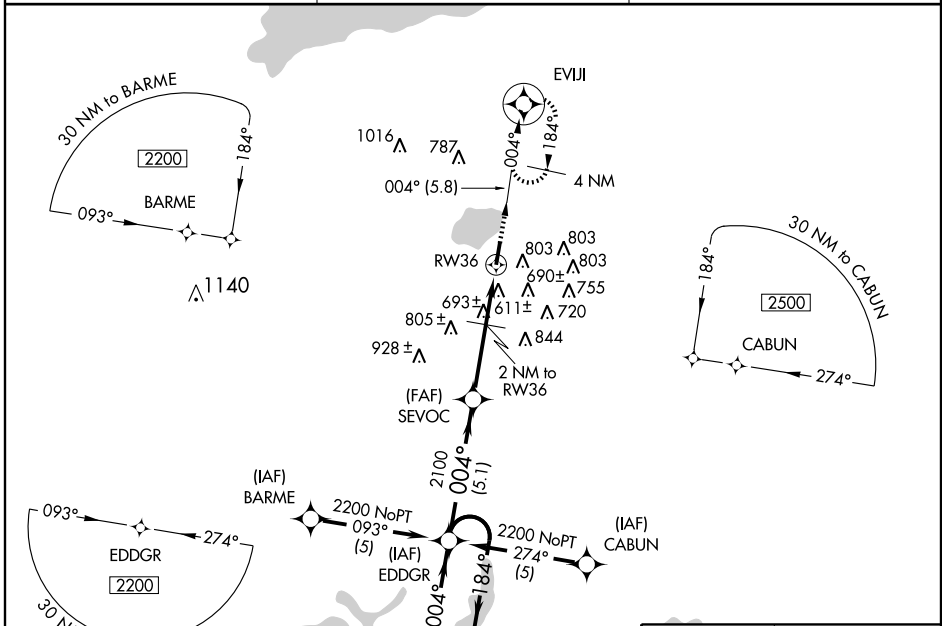
**⚠** GPS or RNP-0.3 REQUIRED. DME/DME RNP-0.3 NA.  
**⚠** NA Obtain local altimeter setting on CTAF; when not received, use Cox Field altimeter setting.  
 Circling not authorized east of Runway 18-36.

MISSED APPROACH: Climb to 2500 via 004° course to EVIJI WP and hold.

AWOS-3  
**118.35**

FORT WORTH CENTER  
**132.85 360.75**

UNICOM  
**123.075 (CTAF) 1**



CATEGORY	A	B	C	D
LNAV MDA	1000-1	511 (600-1)	1000-1½ 511 (600-1½)	NA
CIRCLING	1000-1	511 (600-1)	1000-1½ 511 (600-1½)	NA
COX FIELD ALTIMETER SETTING MINIMUMS				
LNAV MDA	1080-1	591 (600-1)	1080-1½ 591 (600-1½)	NA
CIRCLING	1080-1	591 (600-1)	1080-1½ 591 (600-1½)	NA

SULPHUR SPRINGS, TEXAS  
Orig 05244

33° 10' N-95° 37' W

# SULPHUR SPRINGS MUNI (SLR) RNAV (GPS) RWY 36

SC-2, 22 OCT 2009 to 19 NOV 2009

SC-2, 22 OCT 2009 to 19 NOV 2009