

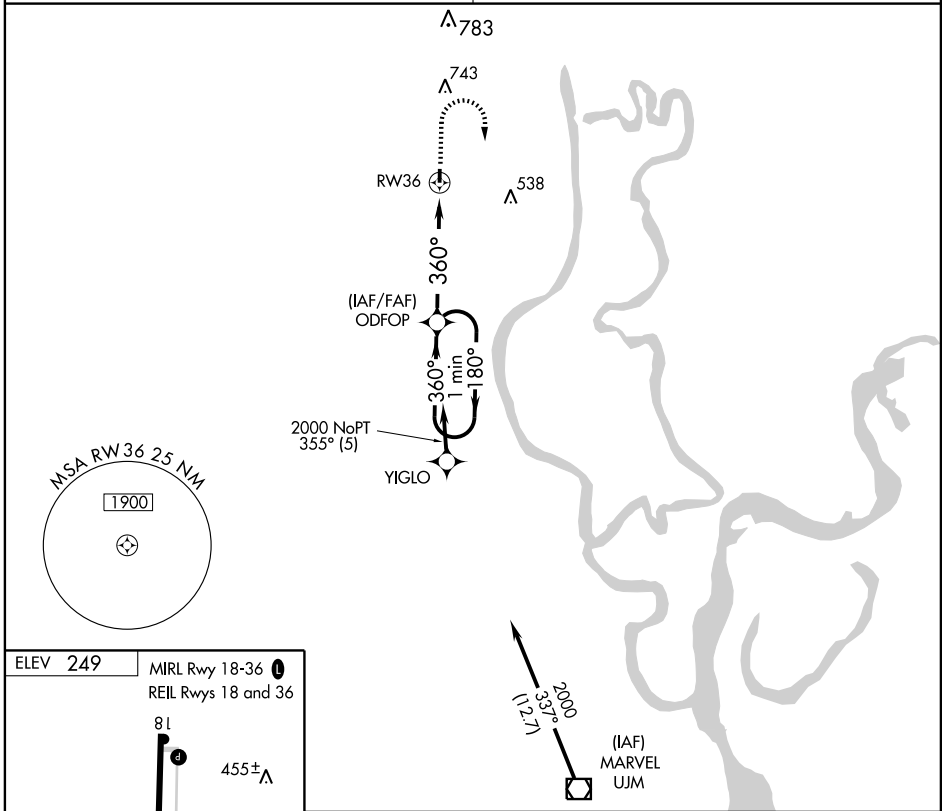
GPS RWY 36

FORREST CITY MUNI (F'CY)

APP CRS 360°	Rwy Idg 3014
	TDZE 249
	Apt Elev 249

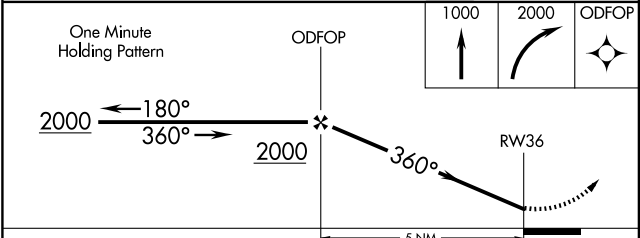
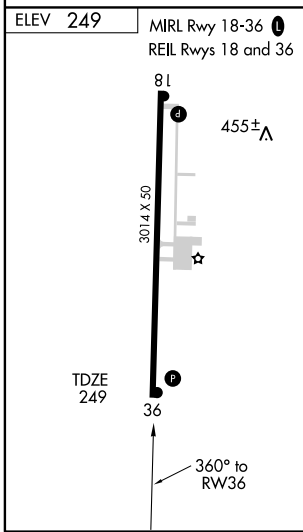
▼ Use Memphis altimeter setting.
▲ NA MISSED APPROACH: Climb to 1000 then climbing right turn to 2000 direct ODFOP WP and hold.

MEMPHIS CENTER **135.3 335.8** UNICOM **122.8 (CTAF) 0**



SC-1, 22 OCT 2009 to 19 NOV 2009

SC-1, 22 OCT 2009 to 19 NOV 2009



CATEGORY	A	B	C	D
S-36	800-1	551 (600-1)		NA
CIRCLING	920-1	671 (700-1)		NA