

# VOR or GPS RWY 27

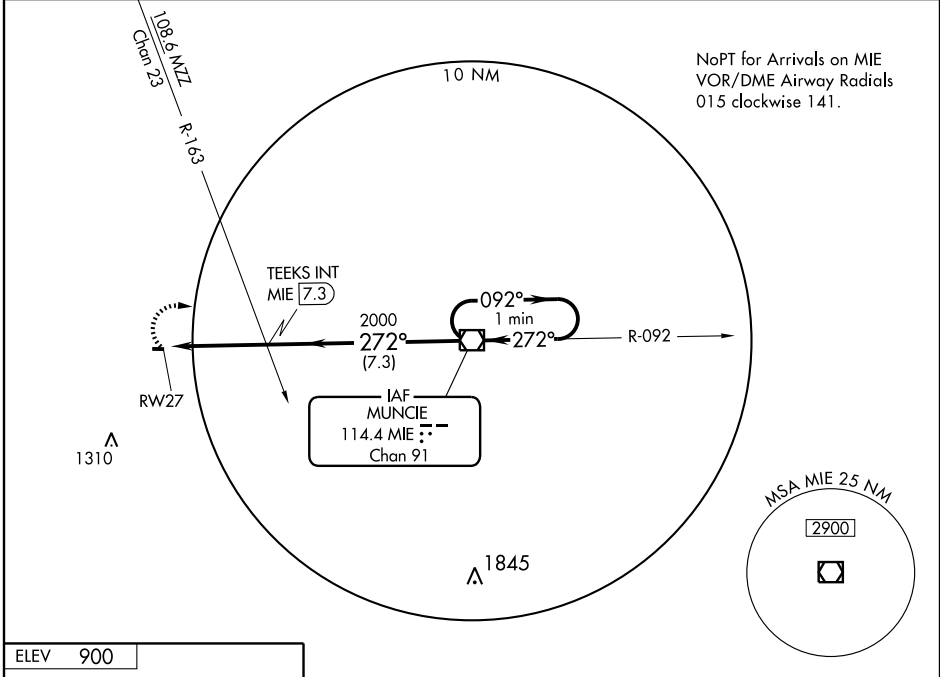
ALEXANDRIA (I99)

VOR/DME MIE <b>114.4</b> Chan <b>91</b>	APP CRS <b>272°</b>	Rwy Idg <b>2314</b> TDZE <b>900</b> Apt Elev <b>900</b>
---	------------------------	---

**NA** Use Muncie altimeter setting; when not received, use Indianapolis altimeter setting. Procedure not authorized at night except by prior arrangement for runway lights.

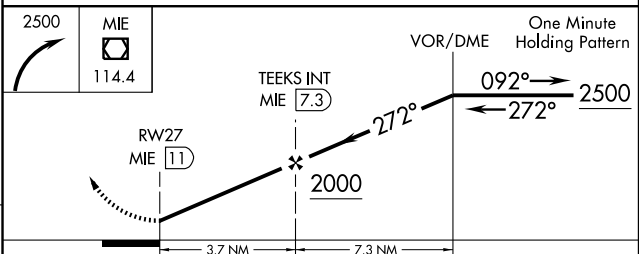
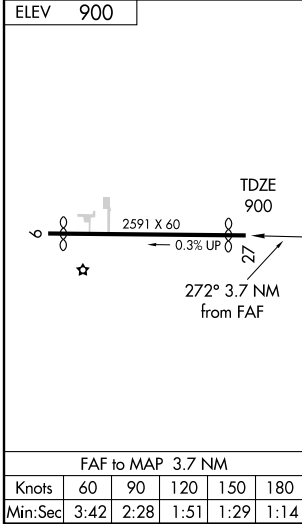
**MISSED APPROACH:** Climbing right turn to 2500 direct MIE VOR/DME and hold.

INDIANAPOLIS CENTER <b>120.65 317.8</b>	CTAF <b>122.8</b>	UNICOM <b>123.05</b>
--	----------------------	-------------------------



EC-2, 22 OCT 2009 to 19 NOV 2009

EC-2, 22 OCT 2009 to 19 NOV 2009



CATEGORY	A	B	C	D
S-27	1320-1	420 (500-1)		NA
CIRCLING	1340-1 440 (500-1)	1380-1 480 (500-1)		NA
INDIANAPOLIS ALTIMETER SETTING MINIMUMS				
S-27	1480-1	580 (600-1)		NA
CIRCLING	1500-1 600 (600-1)	1540-1 640 (700-1)		NA