

RNAV (GPS) RWY 5

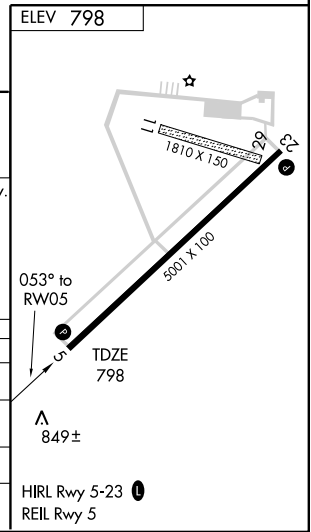
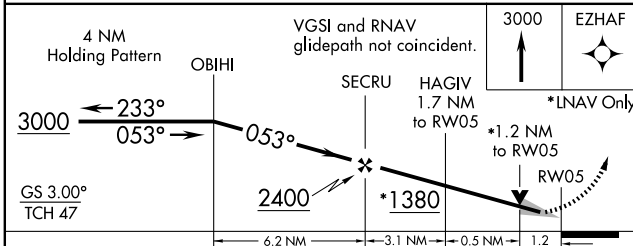
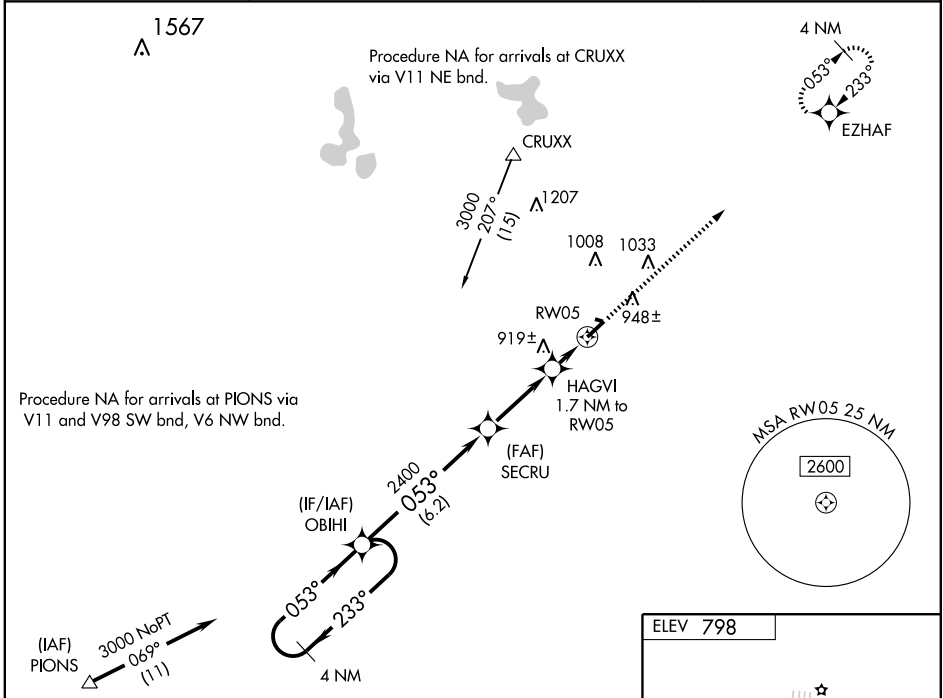
ADRIAN / LENAWEE COUNTY (ADG)

WAAS CH 42603 W05A	APP CRS 053°	Rwy Idg TDZE Apt Elev	5001 798 798
--	------------------------	-----------------------------	---

▼ For uncompensated Baro-VNAV systems, LNAV/VNAV NA below -16°C (4°F) or above 47°C (116°F). DME/DME RNP -0.3 NA. When local altimeter setting not received, use Ann Arbor Muni altimeter setting and increase all DAs 66 ft and all MDAs 80 ft, and increase LPV all Cats, LNAV Cat D and Circling Cat C visibility ½ mile. Baro-VNAV and VDP NA when using Ann Arbor Muni altimeter setting.

MISSED APPROACH: Climb to 3000 direct EZHAF and hold.

ASOS 118.375	TOLEDO APP CON 134.35 317.55	UNICOM 122.8 (CTAF) 0
------------------------	--	--



CATEGORY	A	B	C	D
LPV DA		1048-¾	250 (300-¾)	
LNAV/ DA VNAV		1119-1¼	321 (400-1¼)	
LNAV MDA	1200-1	402 (500-1)	1200-1¼	402 (500-1¼)
CIRCLING	1300-1 502 (600-1)	1320-1 522 (600-1)	1320-1½ 522 (600-1½)	1380-2 582 (600-2)

RNAV (GPS) RWY 5

EC-1, 22 OCT 2009 to 19 NOV 2009

EC-1, 22 OCT 2009 to 19 NOV 2009