

ADRIAN, MICHIGAN

AL-5555 (FAA)

RNAV (GPS) RWY 23

ADRIAN / LENAWEE COUNTY (ADG)

APP CRS 233°	Rwy Idg TDZE Apt Elev	5001 798 798
------------------------	-----------------------------	---

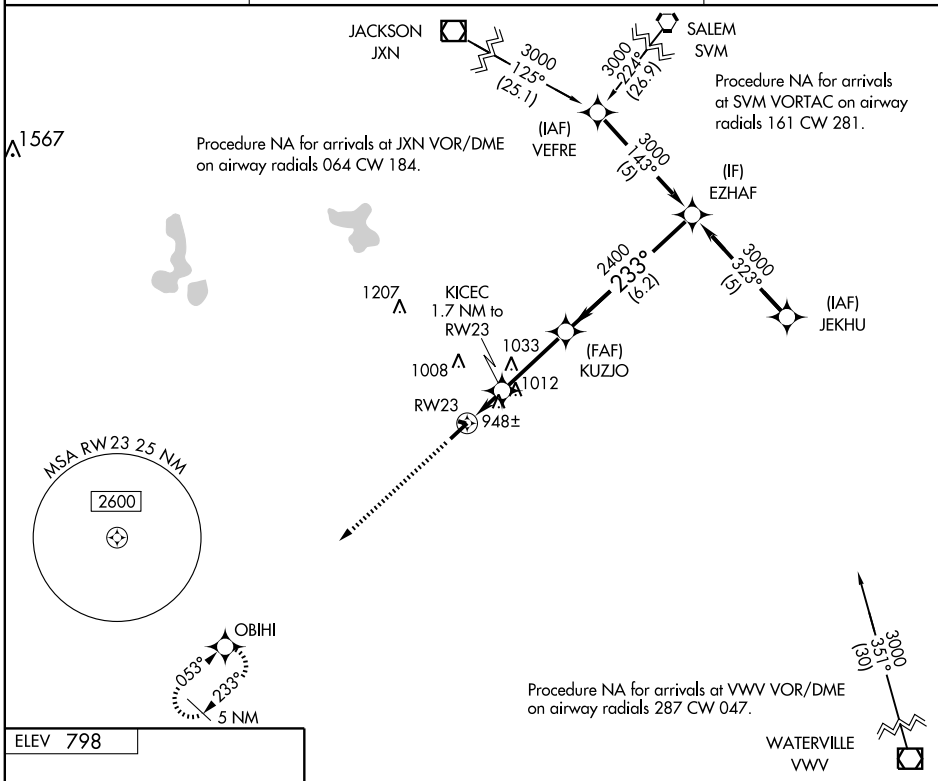
▼ If local altimeter setting not received, use Ann Arbor Muni altimeter setting and increase all MDAs 80 feet.
▲ DME/DME RNP-0.3 NA. Visibility reduction by helicopters NA.

MISSED APPROACH: Climb to 3000 direct OBIHI and hold.

ASOS
118.375

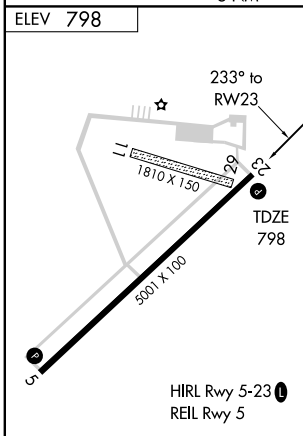
TOLEDO APP CON
134.35 317.55

UNICOM
122.8 (CTAF) 0



EC-1, 22 OCT 2009 to 19 NOV 2009

EC-1, 22 OCT 2009 to 19 NOV 2009



3000	OBIHI	VGSi and descent angles not coincident.			
		EZHAF			
RW23		KICEC 1.7 NM to RW23	KUZJO	EZHAF	3000
1380		2400		Procedure Turn NA	
1.7		3.1 NM		6.2 NM	
CATEGORY	A	B	C	D	
LNAV MDA	1260-1	462 (500-1)	1260-1¼ 462 (500-1¼)	1260-1½ 462 (500-1½)	
CIRCLING	1300-1 502 (600-1)	1320-1 522 (600-1)	1320-1½ 522 (600-1½)	1380-2 582 (600-2)	

ADRIAN, MICHIGAN
Orig 07130

41°52'N - 84°05'W

ADRIAN / LENAWEE COUNTY (ADG)

RNAV (GPS) RWY 23