


RNAV (GPS) RWY 20

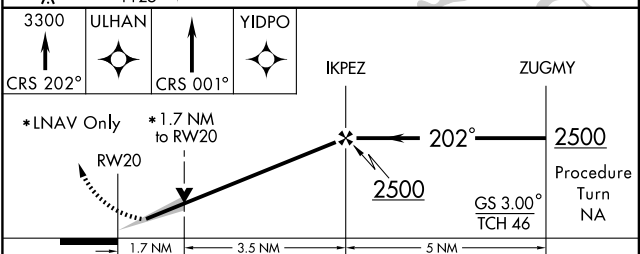
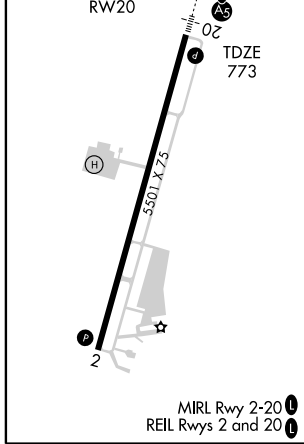
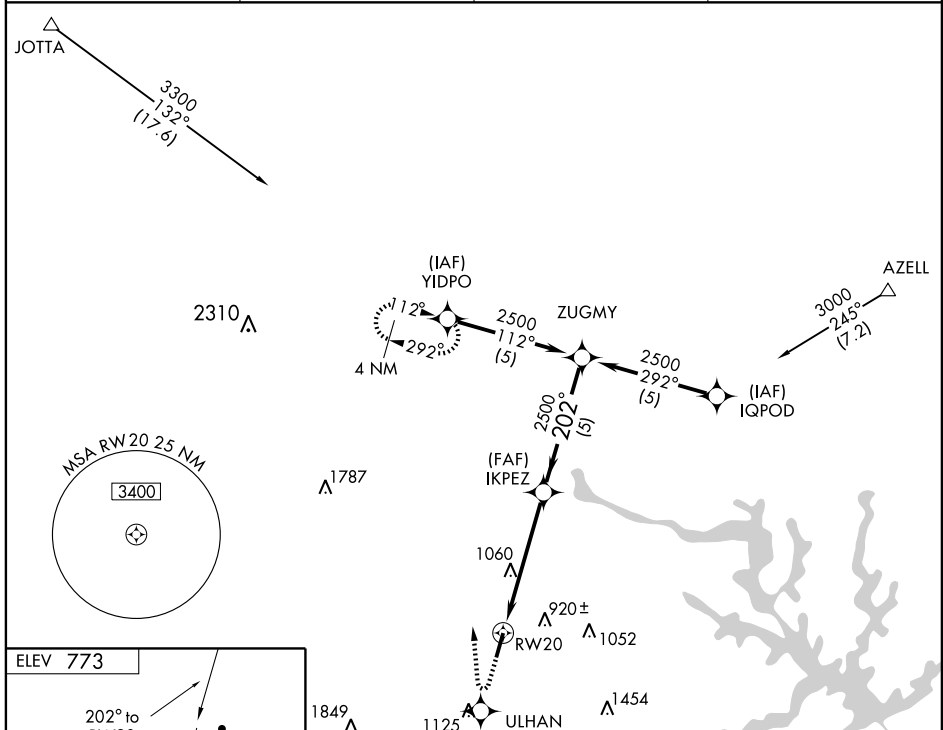
SALISBURY/ ROWAN COUNTY (RUQ)

APP CRS 202°	Rwy Idg 5501
	TDZE 773
	Apt Elev 773

▼ Baro-VNAV NA below -16° C (4° F).
▲ NA GPS or RNP-0.3 Required. DME/DME RNP-0.3 NA.
 For inoperative MALSR, increase LNAV/VNAV
 Cat D visibility to 1 mile.

MALSR  MISSED APPROACH: Climb to 3300 via
 course 202° to ULHAN WP then via
 course 001° to YIDPO WP and hold.

AWOS-3 118.175	CHARLOTTE APP CON 128.32 307.8	CLNC DEL 127.35	UNICOM 122.8 (CTAF) 0
--------------------------	--	---------------------------	---------------------------------



CATEGORY	A	B	C	D
GLS PA DA	NA			
LNAV/ VNAV DA	1060-1/2		287 (300-1/2)	1060-3/4 287 (300-3/4)
LNAV MDA	1360-1/2	587 (600-1/2)	1360-1 587 (600-1)	1360-1/4 587 (600-1/4)
CIRCLING	1360-1	587 (600-1)	1360-1 1/2 587 (600-1 1/2)	1420-2 647 (700-2)

SE-2, 22 OCT 2009 to 19 NOV 2009

SE-2, 22 OCT 2009 to 19 NOV 2009