

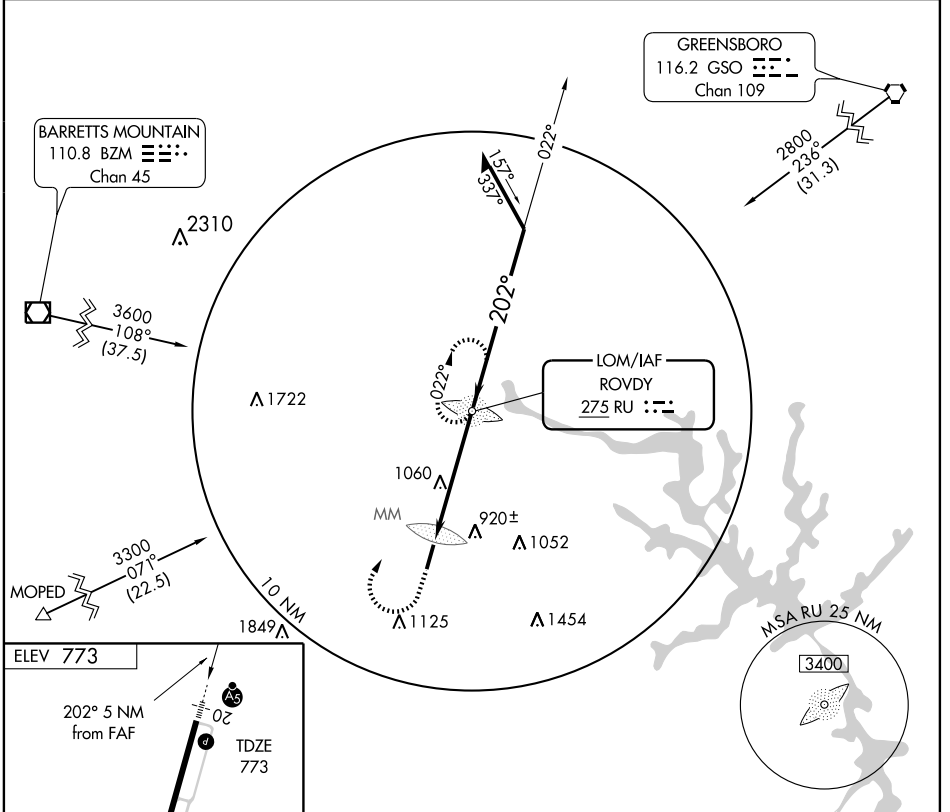
NDB RWY 20

SALISBURY/ROWAN COUNTY (RUQ)

LOM RU 275	APP CRS 202°	Rwy Idg TDZE Apt Elev	5501 773 773
----------------------	------------------------	-----------------------------	---

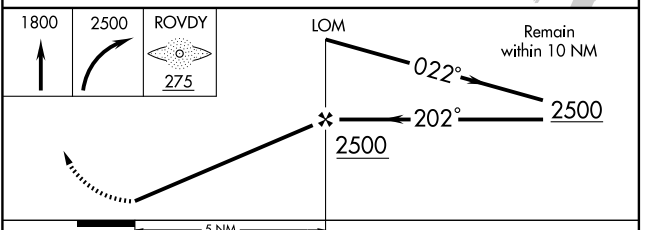
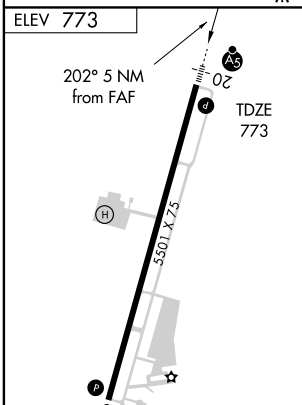
NA	MALSR	MISSED APPROACH: Climb to 1800 then climbing right turn to 2500 direct ROVDY LOM and hold.	
		AWOS-3 118.175	CHARLOTTE APP CON 128.32 307.8

AWOS-3 118.175	CHARLOTTE APP CON 128.32 307.8	CLNC DEL 127.35	UNICOM 122.8 (CTAF)
--------------------------	--	---------------------------	-------------------------------



SE-2, 22 OCT 2009 to 19 NOV 2009

SE-2, 22 OCT 2009 to 19 NOV 2009



FAF to MAP 5 NM		CIRCLING			
Knots	60	90	120	150	180
Min:Sec	5:00	3:20	2:30	2:00	1:40

CATEGORY	A	B	C	D
S-20	1420-¾ 647 (700-¾)	1420-1¼ 647 (700-1¼)	1420-1¾ 647 (700-1¾)	1420-2 647 (700-2)
CIRCLING	1420-1 647 (700-1)	1420-1¾ 647 (700-1¾)	1420-2 647 (700-2)	1420-2 647 (700-2)