

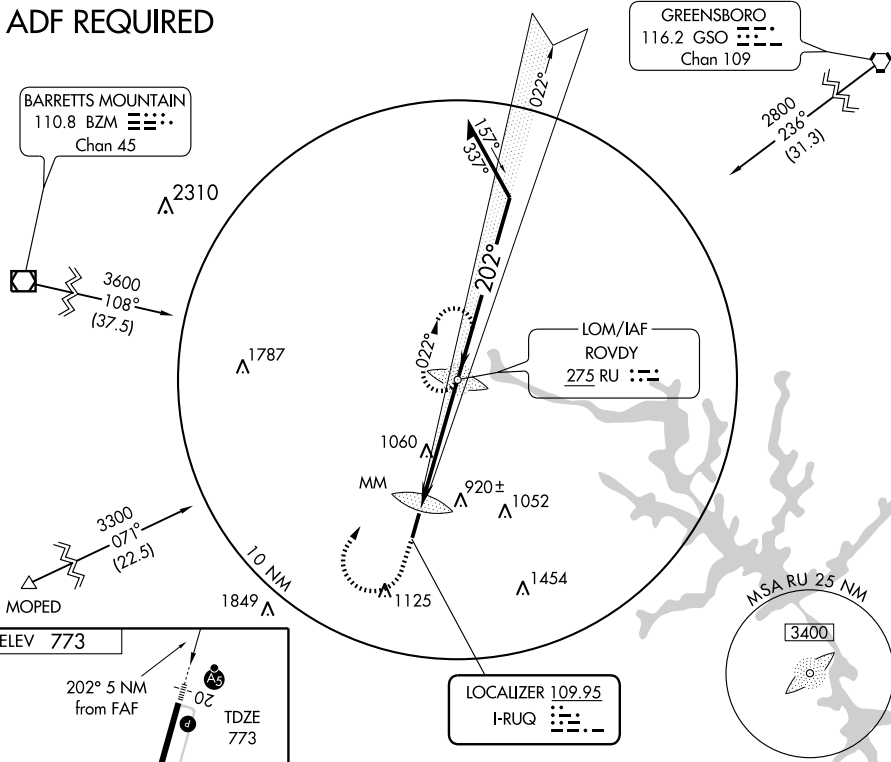
ILS RWY 20
SALISBURY/ROWAN COUNTY (RUQ)

LOC I-RUQ 109.95	APP CRS 202°	Rwy Idg TDZE Apt Elev	5501 773 773
----------------------------	------------------------	-----------------------------	---

		MISSED APPROACH: Climb to 1600 then climbing right turn to 2500 direct ROVDY LOM and hold.	
		AWOS-3 118.175	CHARLOTTE APP CON 128.32 307.8

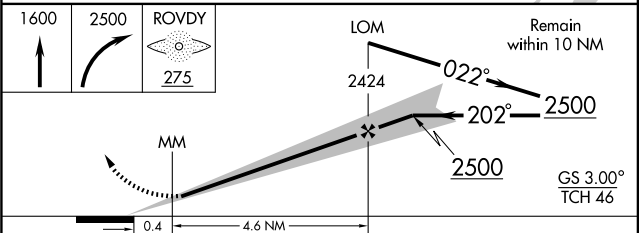
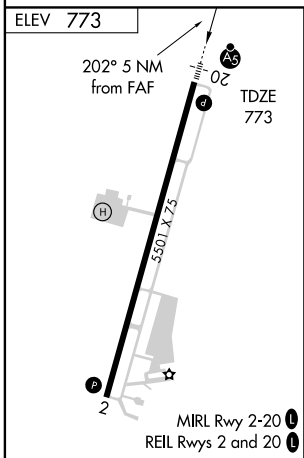
AWOS-3 118.175	CHARLOTTE APP CON 128.32 307.8	CLNC DEL 127.35	UNICOM 122.8 (CTAF)
--------------------------	--	---------------------------	-------------------------------

ADF REQUIRED



SE-2, 22 OCT 2009 to 19 NOV 2009

SE-2, 22 OCT 2009 to 19 NOV 2009



CATEGORY	A	B	C	D
S-ILS 20	973-½		200 (200-½)	
S-LOC 20	1360-½	587 (600-½)	1360-1 587 (600-1)	1360-1¼ 587 (600-1¼)
CIRCLING	1360-1	587 (600-1)	1360-1½ 587 (600-1½)	1420-2 647 (700-2)

FAF to MAP 5 NM					
Knots	60	90	120	150	180
Min:Sec	5:00	3:20	2:30	2:00	1:40