

BEDFORD, INDIANA

AL-5546 (FAA)

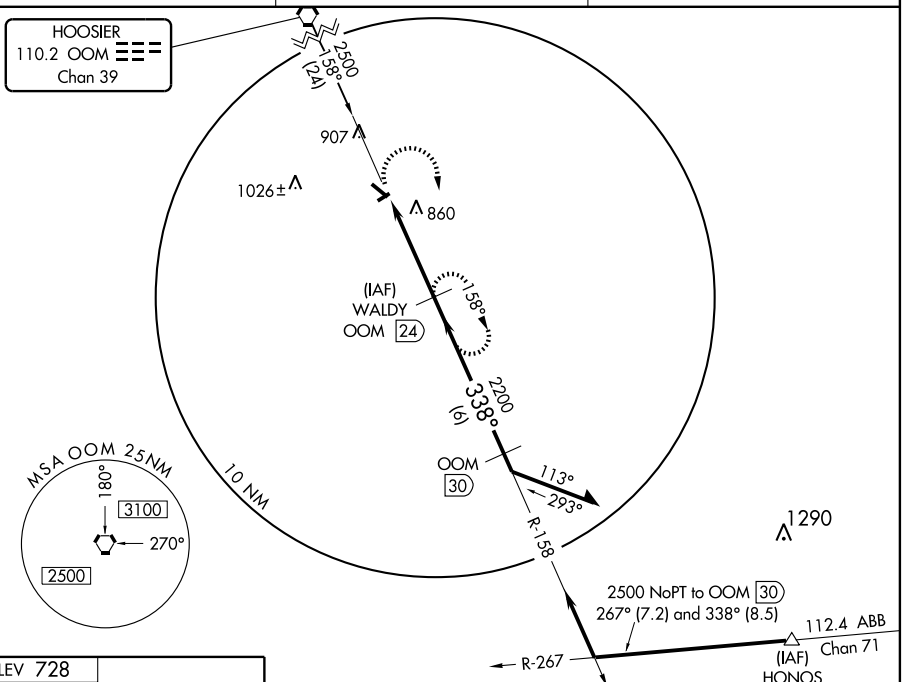
VORTAC OOM <b>110.2</b> Chan <b>39</b>	APP CRS <b>338°</b>	Rwy Idg <b>4501</b> TDZE <b>726</b> Apt Elev <b>728</b>
--	------------------------	---

# VOR/DME RWY 31

BEDFORD/VIRGIL I. GRISSOM MUNI (B'F'R)

**▲ NA** Obtain local altimeter setting on CTAF; when not received, use Indianapolis Intl altimeter setting. MISSED APPROACH: Climbing right turn to 2500 via OOM R-158 to WALDY OOM 24 DME and hold.

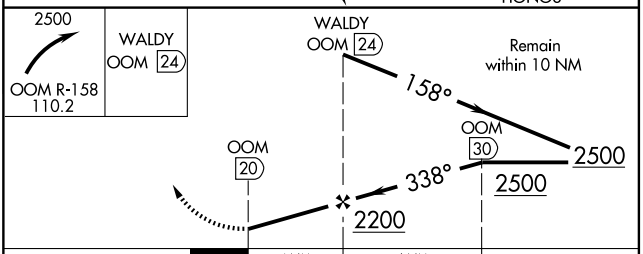
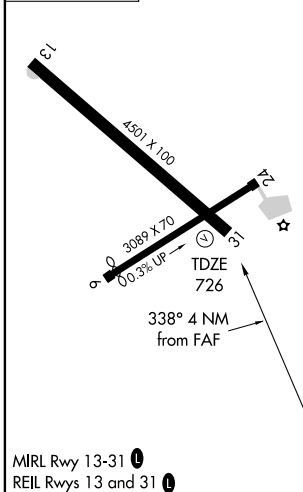
AWOS-3 <b>119.125</b>	INDIANAPOLIS CENTER <b>124.775 269.45</b>	UNICOM <b>122.8 (CTAF) ①</b>
--------------------------	--	---------------------------------



EC-2, 22 OCT 2009 to 19 NOV 2009

EC-2, 22 OCT 2009 to 19 NOV 2009

ELEV 728



CATEGORY	A	B	C	D
S-31	1160-1	434 (500-1)	1160-1¼ 434 (500-1¼)	1160-1½ 434 (500-1½)
CIRCLING	1220-1	492 (500-1)	1220-1½ 492 (500-1½)	1280-2 552 (600-2)
INDIANAPOLIS INTL ALTIMETER SETTING MINIMUMS				
S-31	1300-1	574 (600-1)	1300-1½ 574 (600-1½)	1300-1¾ 574 (600-1¾)
CIRCLING	1360-1	632 (700-1)	1360-1¾ 632 (700-1¾)	1400-2¼ 672 (700-2¼)

BEDFORD, INDIANA  
Amdt 9 09015

38°50'N-86°27'W

# VOR/DME RWY 31