

RNAV (GPS) RWY 4

PARAGOULD/KIRK FIELD (PGR)

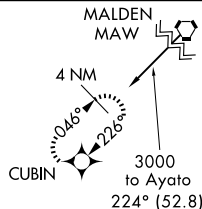
APP CRS 045°	Rwy Idg 4011
	TDZE 289
	Apt Elev 290

▼ Use Jonesboro altimeter setting.
▲ NA GPS or RNP-0.3 required. DME/DME RNP-0.3 NA. MISSED APPROACH: Climb to 3000 direct CUBIN WP and hold.

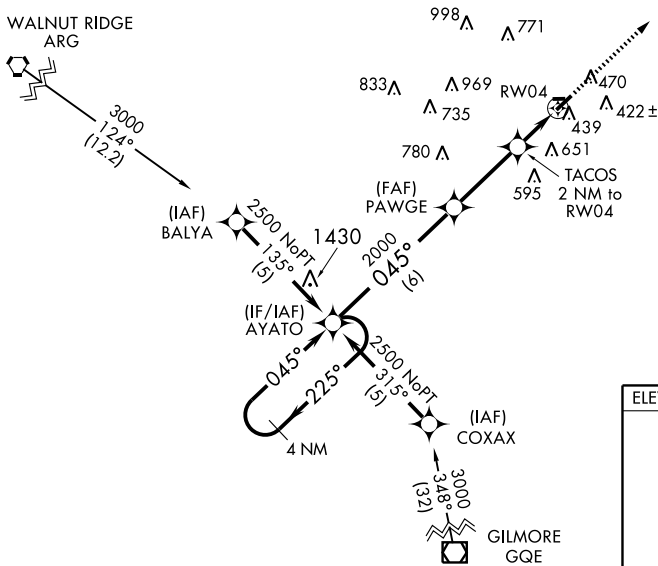
MEMPHIS CENTER
120.075 289.4

UNICOM
122.8 (CTAF) 0

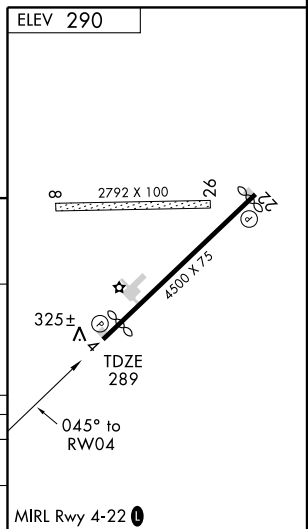
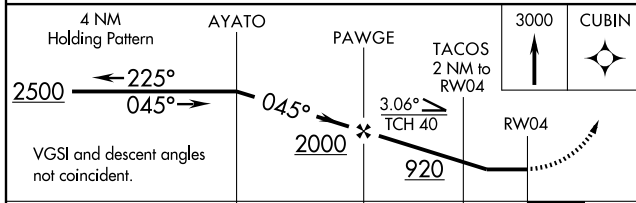
Procedure NA for arrival on MAW VORTAC airway radials 198 CW 239.
 Procedure NA for arrival on ARG VORTAC airway radials 089 CW 149.
 Procedure NA for arrival on GQE VOR/DME airway radials 329 CW 017.



SC-1, 22 OCT 2009 to 19 NOV 2009



SC-1, 22 OCT 2009 to 19 NOV 2009



	4 NM Holding Pattern	AYATO	PAWGE	TACOS 2 NM to RW04	3000	CUBIN
	2500	← 225°	045° →	045°	3.06° TCH 40	RW04
			2000	920		
		6 NM	3.2 NM	2 NM		
CATEGORY	A	B	C	D		
LNAV MDA	800-1¼	511 (600-1¼)		NA		
CIRCLING	860-1¼	570 (600-1¼)		NA		