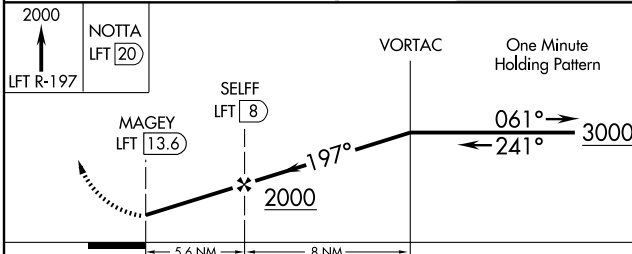
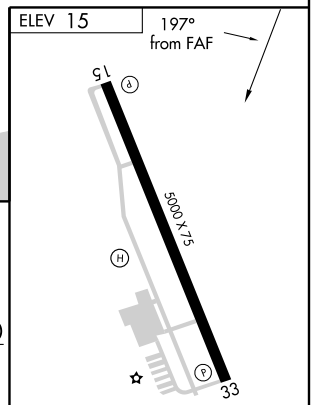
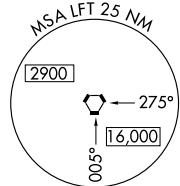
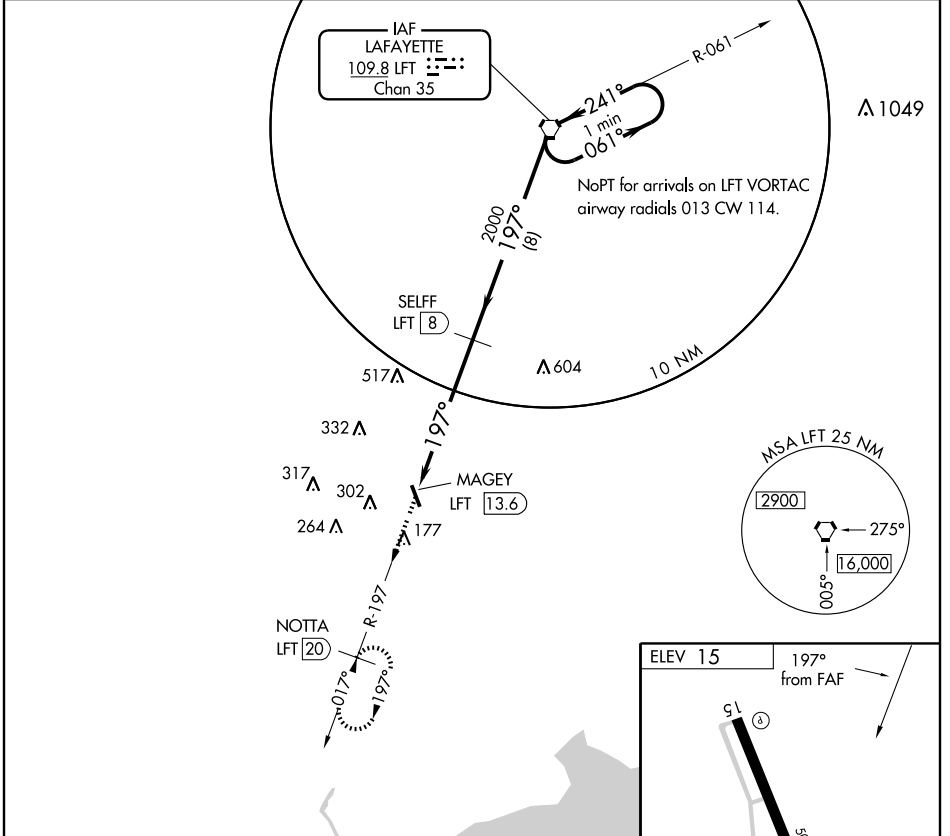


VORTAC LFT <b>109.8</b> Chan <b>35</b>	APP CRS <b>197°</b>	Rwy Idg TDZE Apt Elev	<b>N/A</b> <b>N/A</b> <b>15</b>
--	------------------------	-----------------------------	---------------------------------------

**▲ NA** Use Lafayette Rgnl altimeter setting; if not received, use Acadiana Rgnl altimeter setting.

MISSED APPROACH: Climb to 2000 via LFT R-197 to NOTTA/ LFT 20 DME and hold.

AWOS-3 <b>118.875</b>	LAFAYETTE APP CON* <b>121.1 268.7</b>	GCO <b>135.075</b>	UNICOM <b>122.8 (CTAF) Ø</b>
--------------------------	--	-----------------------	---------------------------------



CATEGORY	A	B	C	D
CIRCLING	640-1	625 (700-1)	640-1¼ 625 (700-1¼)	NA

MIRL Rwy 15-33 Ø  
REIL Rwy 15 and 33 Ø

SC-4, 22 OCT 2009 to 19 NOV 2009

SC-4, 22 OCT 2009 to 19 NOV 2009