

BARDSTOWN, KENTUCKY

AL-5539 (FAA)

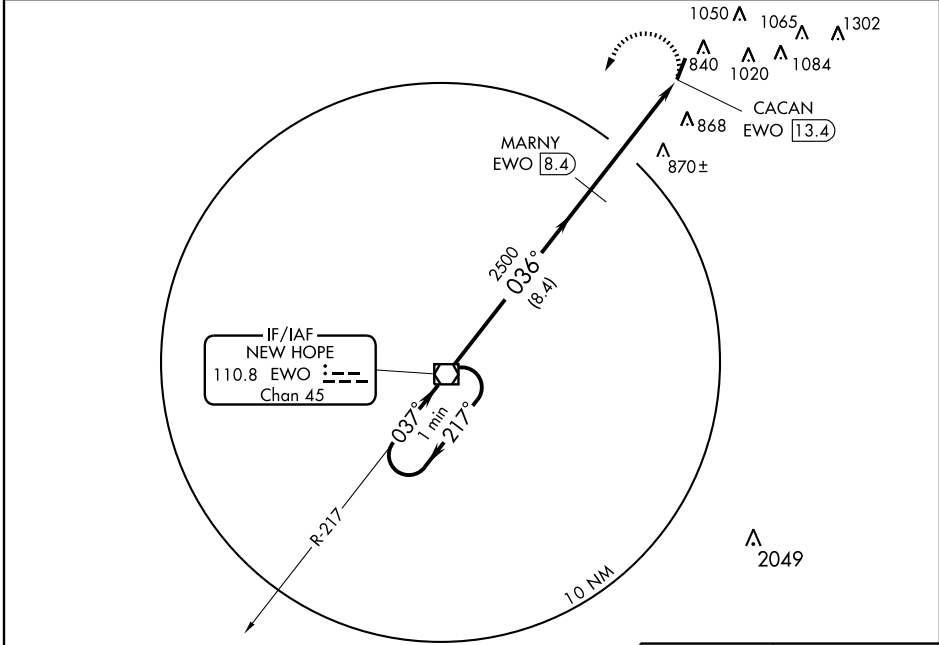
VOR/DME EWO <b>110.8</b> Chan <b>45</b>	APP CRS <b>036°</b>	Rwy Idg TDZE Apt Elev	<b>N/A</b> <b>N/A</b> <b>669</b>
---	------------------------	-----------------------------	--

**VOR/DME-A**  
BARDSTOWN/SAMUELS FIELD (BRY)

When local altimeter setting not received, use Louisville Intl altimeter setting and increase all MDAs 80 feet, increase Cat C visibility 1/2 mile and Cat D visibility 1/4 mile.

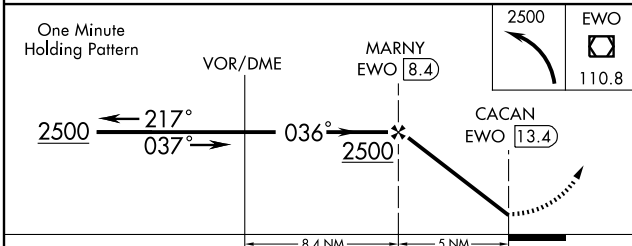
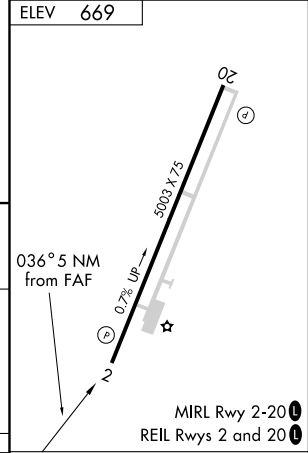
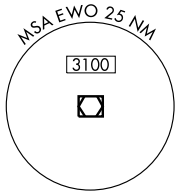
MISSED APPROACH: Climbing left turn to 2500 direct EWO VOR/DME and hold.

AWOS-3 <b>119.925</b>	LOUISVILLE APP CON <b>132.075 327.0</b>	UNICOM <b>122.8 (CTAF)</b>
--------------------------	--	-------------------------------



SE-1, 22 OCT 2009 to 19 NOV 2009

SE-1, 22 OCT 2009 to 19 NOV 2009



CATEGORY	A	B	C	D	Knots	60	90	120	150	180
CIRCLING	1200-1 531 (600-1)	1260-1 591 (600-1)	1260-1½ 591 (600-1½)	1380-2¼ 711 (800-2¼)	Min:Sec					

BARDSTOWN, KENTUCKY  
Orig-A 08017

37°49'N-85°30'W

BARDSTOWN/SAMUELS FIELD (BRY)  
**VOR/DME-A**