

HOUSTON, TEXAS

AL-5537 (FAA)

VOR/DME HUB <b>117.1</b> Chan <b>118</b>	APP CRS <b>080°</b>	Rwy Idg TDZE N/A Apt Elev N/A <b>82</b>
--	------------------------	---

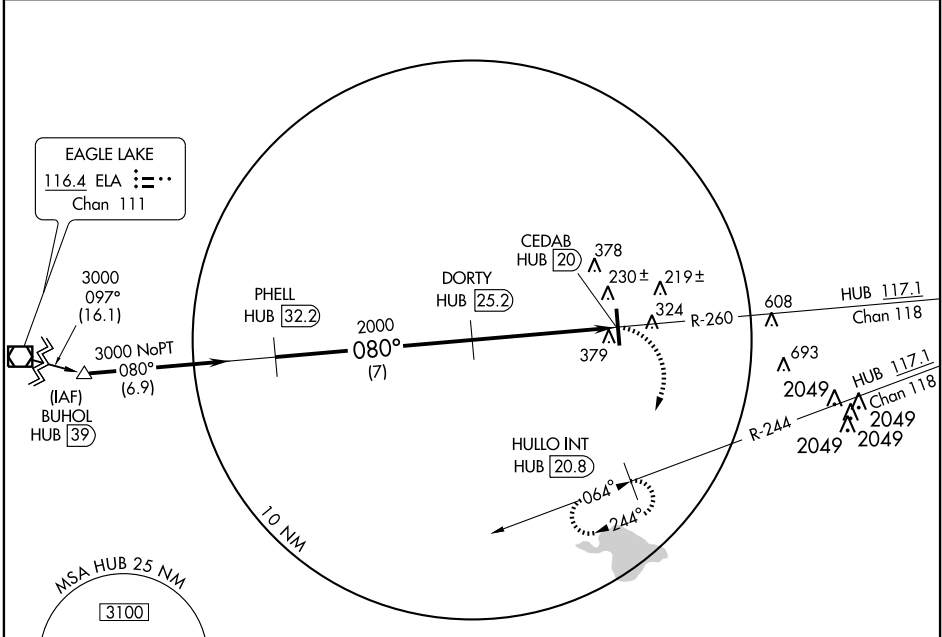
# VOR/DME-A

HOUSTON/ SUGAR LAND RGNL (SGR)

**NA** When local altimeter setting not received, use Houston, TX (William P. Hobby) altimeter setting.

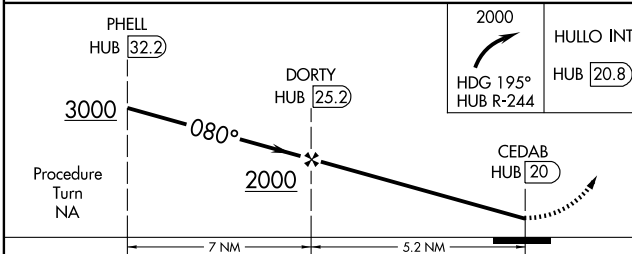
MISSED APPROACH: Climbing right turn to 2000 via heading 195° and HUB R-244 to HULLO Int/HUB 20.8 DME and hold.

ASOS <b>118.125</b>	HOUSTON APP CON <b>123.8 257.7</b>	SUGAR LAND TOWER* <b>118.65</b> (CTAF) <b>0</b>	GND CON <b>121.4</b>	CLNC DEL <b>121.4</b>	HOUSTON CLNC DEL <b>119.25</b> (When tower closed)	UNICOM <b>122.95</b>
------------------------	---------------------------------------	--	-------------------------	--------------------------	--	-------------------------

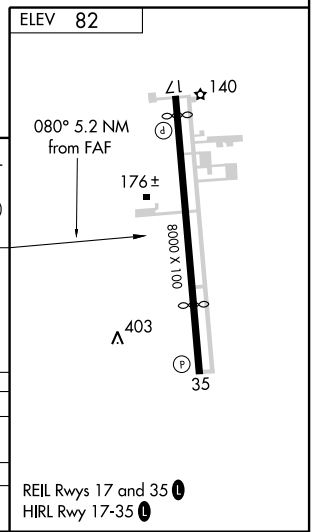


SC-5, 22 OCT 2009 to 19 NOV 2009

SC-5, 22 OCT 2009 to 19 NOV 2009



CATEGORY	A	B	C	D
CIRCLING	720-1	638 (700-1)	720-1 3/4 638 (700-1 3/4)	720-2 638 (700-2)
HOUSTON (WILLIAM P. HOBBY) ALTIMETER SETTING MINIMUMS				
CIRCLING	760-1	678 (700-1)	760-2 678 (700-2)	760-2 1/4 678 (700-2 1/4)



HOUSTON, TEXAS  
Amdt 1A 09239

29°37'N - 95°39'W

HOUSTON/ SUGAR LAND RGNL (SGR)  
**VOR/DME-A**

REIL Rwy 17 and 35 **0**  
HIRL Rwy 17-35 **0**