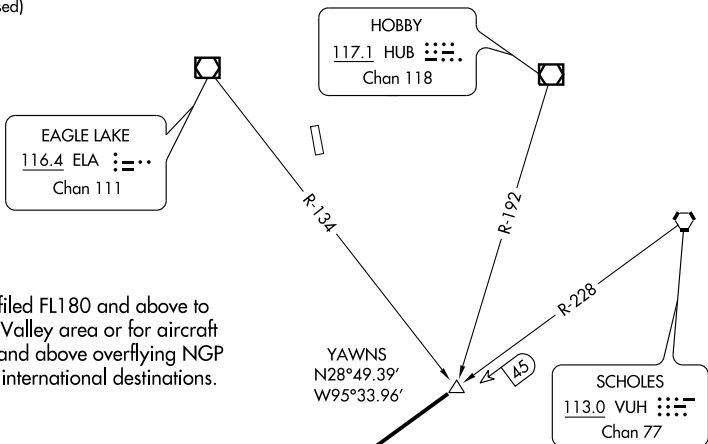


ASOS
 118.125
 CLNC DEL
 121.4
 HOUSTON CLNC DEL
 119.25 (When tower closed)
 GND CON
 121.4
 SUGAR LAND TOWER ★
 118.65
 HOUSTON DEP CON
 123.8 257.7



Note: For aircraft filed FL180 and above to Rio Grande Valley area or for aircraft filed FL180 and above overflying NGP VORTAC to international destinations.

TRUAX
 114.0 NGP
 Chan 87
 N27°41.18' - W97°17.69'
 L-20-21

228°
 (114)

TAKE-OFF MINIMUMS:
 Rwy 17, 35, standard.

TAKE-OFF OBSTACLES:

Rwy 17, Multiple poles beginning 436' from DER, 172' right of centerline, up to 44' AGL/124' MSL. Railroad 110' from DER, 10' left of centerline, 23' AGL/104' MSL. Multiple poles beginning 135' from DER, 270' left of centerline, up to 44' AGL/111' MSL.

Rwy 35, Vehicle and road 65' from DER, 2' right of centerline, 15' AGL/96' MSL. Multiple trees beginning 37' from DER, 275' right of centerline, up to 81' AGL/164' MSL. DME antenna 380' from DER, 253' right of centerline, 24' AGL/100' MSL. Multiple trees beginning 83' from DER, 65' left of centerline, up to 81' AGL/155' MSL.

NOTE: Chart not to scale.

NOTE: Radar Required.

DEPARTURE ROUTE DESCRIPTION

When entering controlled airspace, fly assigned heading for vectors to YAWNS INT, maintain 4000', expect filed altitude 10 minutes after departure. Thence...

... via VUH R-228 and NGP R-047 to NGP VORTAC.