

HOUSTON, TEXAS

AL-5537 (FAA)

WAAS CH 56219 W35A	APP CRS 350°	Rwy ldg TDZE 79 Apt Elev 82	6016
---------------------------------	------------------------	---	-------------

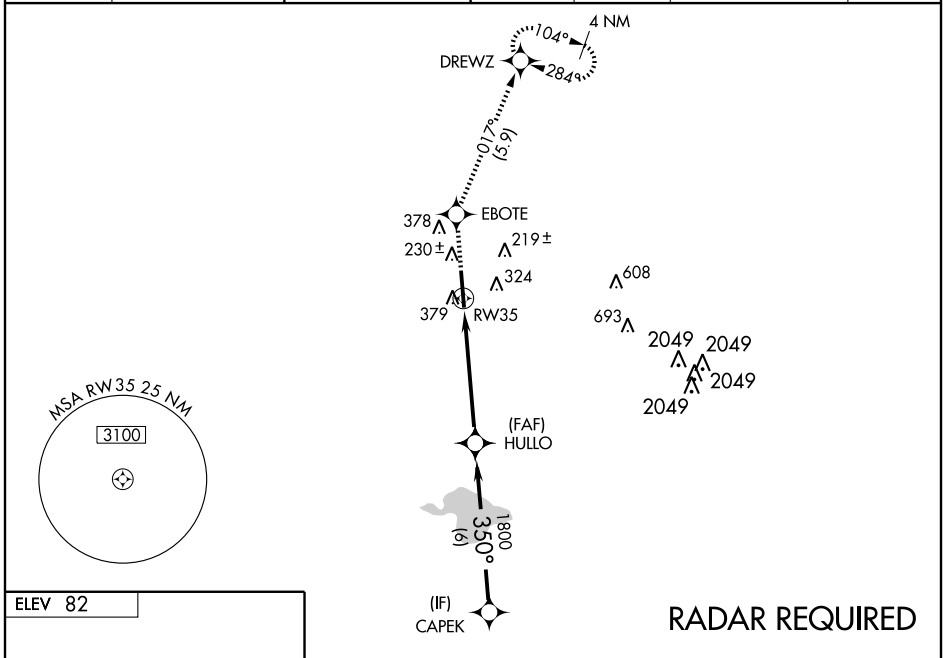
RNAV (GPS) RWY 35

HOUSTON/ SUGAR LAND RGNL (SGR)

▼ DME/DME RNP-0.3 NA.
When local altimeter setting not received, use Houston (William P. Hobby) altimeter setting and increase all DAs/MDAs 60 feet.
▲ NA Baro-VNAV NA below -15°C (5°F).
Baro-VNAV and VDP NA when using Houston (William P. Hobby) altimeter setting.

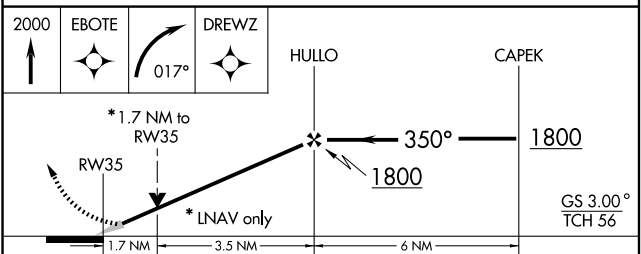
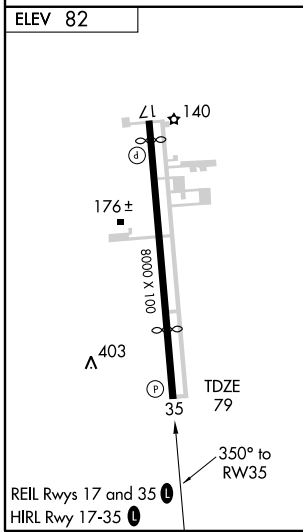
MISSED APPROACH: Climb to 2000 direct EBOTE and right turn via 017° track to DREWZ and hold.

ASOS 118.125	HOUSTON APP CON 123.8 257.7	SUGAR LAND TOWER* 118.65 (CTAF) 0	GND CON 121.4	CLNC DEL 121.4	HOUSTON CLNC DEL 119.25 (When tower closed)	UNICOM 122.95
------------------------	---------------------------------------	--	-------------------------	--------------------------	--	-------------------------



SC-5, 22 OCT 2009 to 19 NOV 2009

SC-5, 22 OCT 2009 to 19 NOV 2009



CATEGORY	A	B	C	D
LPV DA		330-¾	251 (300-¾)	
LNAV/VNAV DA		660-2	581 (600-2)	
LNAV MDA	660-1	581 (600-1)	660-1½ 581 (600-1½)	660-1¾ 581 (600-1¾)
CIRCLING	720-2 638 (700-2)			

HOUSTON, TEXAS
Amdt 1 09239

29°37'N - 95°39'W

RNAV (GPS) RWY 35

HOUSTON/ SUGAR LAND RGNL (SGR)