

LEONA SIX DEPARTURE

SL-5537 (FAA)

HOUSTON/ SUGAR LAND RGNL (SGR)

HOUSTON, TEXAS

ARDMORE
116.7 ADM
Chan 114
N34°12.69' - W97°10.10'
L-17, H-6

TULSA
114.4 TUL
Chan 91
N36°11.78' - W95°47.29'
L-15, H-6

BONHAM
114.6 BYP
Chan 93
N33°32.25' - W96°14.05'
L-17, H-6

RANGER
115.7 FUZ
Chan 104
N32°53.37' - W97°10.77'
L-17, H-6

DOLEY
N32°11.35'
W96°23.08'

CEDAR CREEK
114.8 CQY
Chan 95
N32°11.14' - W96°13.09'

WACO
115.3 ACT
Chan 100
N31°39.74' - W97°16.14'
L-19, H-6

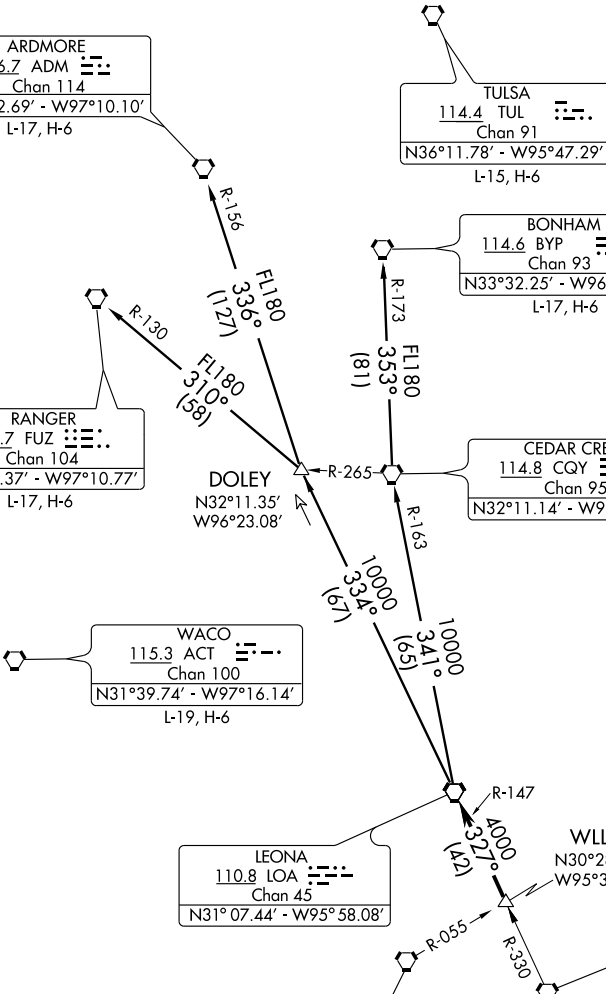
LEONA
110.8 LOA
Chan 45
N31°07.44' - W95°58.08'

WLLIS
N30°28.88'
W95°37.39'

HUMBLE
116.6 IAH
Chan 113

NAVASOTA
115.9 TNV
Chan 106

ASOS
118.125
CLNC DEL 121.4
HOUSTON CLNC DEL
119.25 (When tower closed)
GND CON 121.4
SUGARLAND TOWER★
118.65 (CTAF)
HOUSTON DEP CON
123.8 257.7



TAKE-OFF MINIMUMS:
Rwy 17, 35 standard.

NOTE: Chart not to scale.

(NARRATIVE ON FOLLOWING PAGE)

NOTE: Radar required.

LEONA SIX DEPARTURE

HOUSTON, TEXAS

HOUSTON/ SUGAR LAND RGNL (SGR)

SC-5, 22 OCT 2009 to 19 NOV 2009

SC-5, 22 OCT 2009 to 19 NOV 2009