

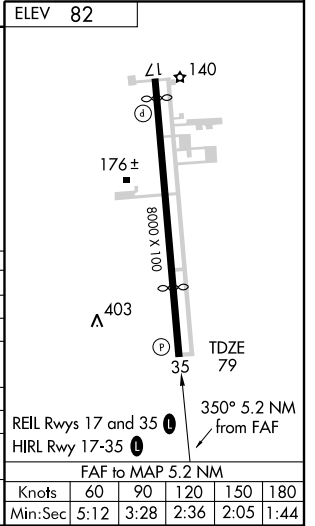
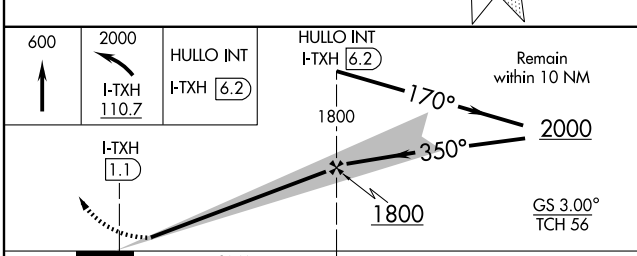
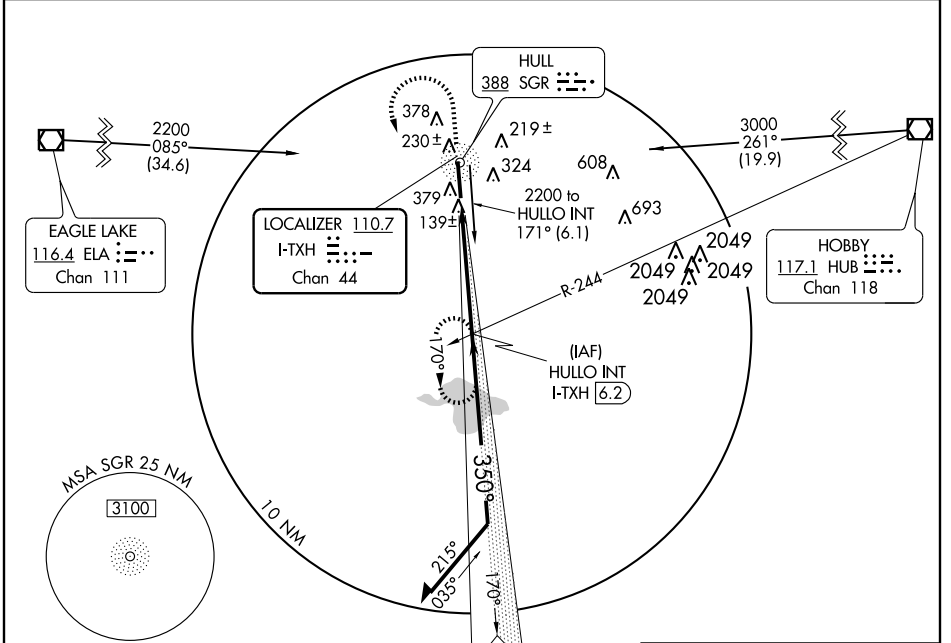
ILS RWY 35

HOUSTON/ SUGAR LAND RGNL (SGR)

LOC I-TXH 110.7 Chan 44	APP CRS 350°	Rwy Idg TDZE 79 Apt Elev 82
---	------------------------	---

▼ When local altimeter setting not received, use Houston, TX (William P. Hobby) altimeter setting.
▲ NA MISSED APPROACH: Climb to 600 then climbing left turn to 2000 via I-TXH south course to HULLO INT/I-TXH 6.2 DME and hold.

ASOS 118.125	HOUSTON APP CON 123.8 257.7	SUGAR LAND TOWER* 118.65 (CTAF) 0	GND CON 121.4	CLNC DEL 121.4	HOUSTON CLNC DEL 119.25 (When tower closed)	UNICOM 122.95
------------------------	---------------------------------------	--	-------------------------	--------------------------	--	-------------------------



CATEGORY	A	B	C	D
S-ILS 35		279-¾	200 (200-¾)	
S-LOC 35		400-1	321 (400-1)	
CIRCLING	720-1	638 (700-1)	720-2	638 (700-2)
HOUSTON, TX (WILLIAM P. HOBBY) ALTIMETER SETTING MINIMUMS				
S-ILS 35		330-¾	251 (300-¾)	
S-LOC 35		440-1	361 (400-1)	440-1½
				361 (400-1½)
CIRCLING	760-1	678 (700-1)	760-2	760-2½
			678 (700-2)	678 (700-2½)

ILS RWY 35

SC-5, 22 OCT 2009 to 19 NOV 2009

SC-5, 22 OCT 2009 to 19 NOV 2009