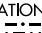
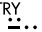



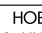
COLLEGE STATION
 113.3 CLL 
 Chan 80
 N30°36.30' - W96°25.24'
 L-19-21, H-7

INDUSTRY
 110.2 IDU 
 Chan 39
 N29°57.36' - W96°33.73'

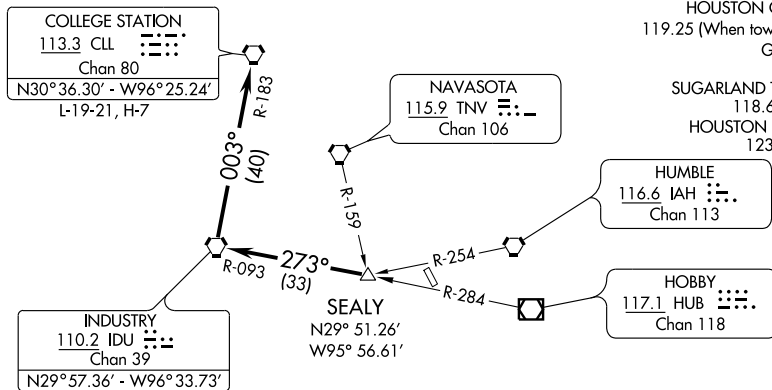
NAVASOTA
 115.9 TNV 
 Chan 106

ASOS
 118.125
 CLNC DEL
 121.4
 HOUSTON CLNC DEL
 119.25 (When tower closed)
 GND CON
 121.4
 SUGARLAND TOWER *
 118.65 (CTAF)
 HOUSTON DEP CON
 123.8 257.7

HUMBLE
 116.6 IAH 
 Chan 113

HOBBY
 117.1 HUB 
 Chan 118

SEALY
 N29° 51.26'
 W95° 56.61'



TAKE-OFF MINIMUMS:

Rwys 17, 35 standard.

TAKE-OFF OBSTACLES:

- Rwy 17, Multiple poles beginning 436' from DER, 172' right of centerline, up to 44' AGL/124' MSL. Railroad 110' from DER, 10' left of centerline, 23' AGL/104' MSL. Multiple poles beginning 135' from DER, 270' left of centerline, up to 44' AGL/111' MSL.
- Rwy 35, Vehicle and road 65' from DER, 2' right of centerline, 15' AGL/96' MSL. Multiple trees beginning 37' from DER, 275' right of centerline, up to 81' AGL/164' MSL. DME antenna 380' from DER, 253' right of centerline, 24' AGL/100' MSL. Multiple trees beginning 83' from DER, 65' left of centerline, up to 81' AGL/155' MSL.

NOTE: Radar Required.

NOTE: Chart not to scale.



DEPARTURE ROUTE DESCRIPTION

When entering controlled airspace, fly assigned heading for vectors to SEALY INT, maintain 4000, expect filed altitude 10 minutes after departure. Thence . . .

. . . via IDU R-093 to IDU VORTAC, then right turn via IDU R-003 and CLL R-183 to CLL VORTAC.