

NEWARK, OHIO

AL-5536 (FAA)

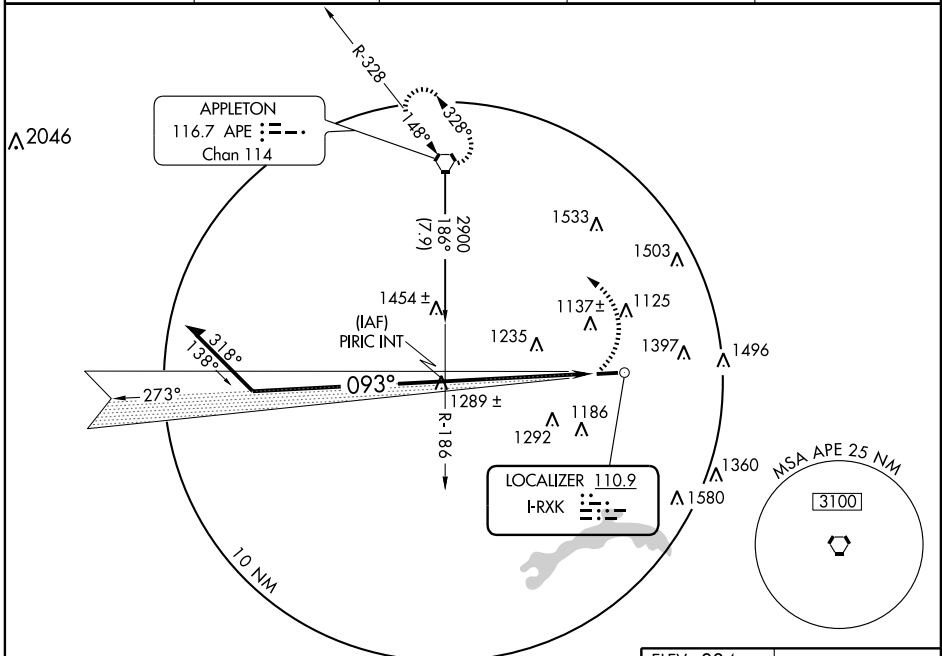
LOC RWY 9 NEWARK-HEATH (VTA)

LOC I-RXK 110.9	APP CRS 093°	Rwy ldg 4194 TDZE 883 Apt Elev 884
---------------------------	------------------------	---

▼ If local altimeter not received, use Port Columbus Intl altimeter setting and increase all MDAs 60 feet.
▲

MISSED APPROACH: Climbing left turn to 2900 direct APE VORTAC and hold.

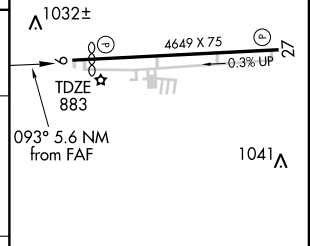
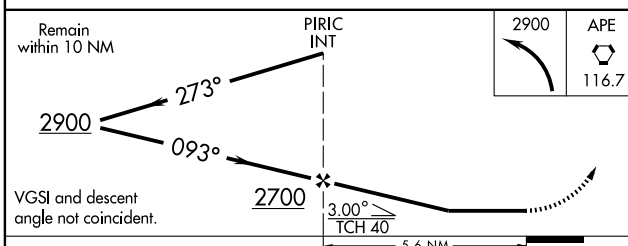
ASOS 121.125	COLUMBUS APP CON 120.2 317.775	CLNC DEL 124.85	UNICOM 122.7 (CTAF)	123.3 0
------------------------	--	---------------------------	-------------------------------	----------------



EC-2, 22 OCT 2009 to 19 NOV 2009

EC-2, 22 OCT 2009 to 19 NOV 2009

ELEV 884	Rwy 9 ldg 4194'
----------	-----------------



CATEGORY	A	B	C	D
S-9	1420-1 537 (600-1)	1420-1½ 537 (600-1½)	1420-1¾ 537 (600-1¾)	1420-2 537 (600-2)
CIRCLING	1480-1 596 (600-1)	1480-1½ 596 (600-1½)	1560-2¼ 676 (700-2¼)	

REIL Rwys 9 and 27 0					
MIRL Rwy 9-27 0					
FAF to MAP 5.6 NM					
Knots	60	90	120	150	180
Min:Sec	5:36	3:44	2:48	2:14	1:52

NEWARK, OHIO
Orig 08213

40°01'N - 82°28'W

NEWARK-HEATH (VTA) LOC RWY 9