

GRAHAM, TEXAS

AL-5535 (FAA)

# RNAV (GPS) RWY 21

GRAHAM MUNI (RPH)

APP CRS	Rwy Idg	<b>5000</b>
<b>213°</b>	TDZE	<b>1114</b>
	Apt Elev	<b>1123</b>

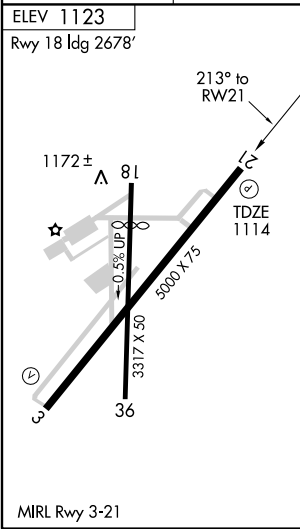
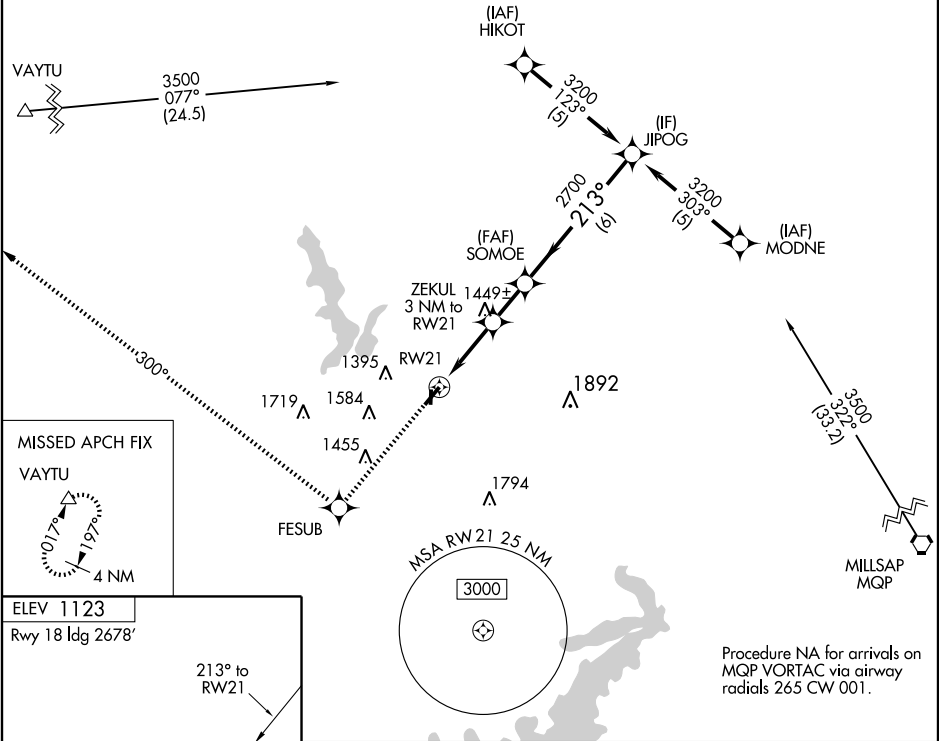
- ▼ When local altimeter setting not received, use Mineral Wells altimeter setting and increase all MDAs 100 feet.
- ▲ Visibility reduction by helicopters NA. DME/DME RNP-0.3 NA.

MISSED APPROACH: Climb to 3900 direct FESUB and via 300° track to VAYTU and hold.

AWOS-3 <b>118.025</b>	FORT WORTH CENTER <b>127.0 360.6</b>	UNICOM <b>122.975</b> (CTAF)
--------------------------	---	---------------------------------

SC-2, 22 OCT 2009 to 19 NOV 2009

SC-2, 22 OCT 2009 to 19 NOV 2009



3900	FESUB	300° track	VAYTU	JIPOG
			SOMOE	3200
			ZEKUL 3 NM to RW21	2100
			RW21	2700
				Procedure Turn NA
				3 NM
				1.8 NM
				6 NM
CATEGORY	A	B	C	D
LNAV MDA	1700-1	586 (600-1)	NA	
CIRCLING	1700-1	577 (600-1)	NA	

Procedure NA for arrivals on MQP VORTAC via airway radials 265 CW 001.

GRAHAM, TEXAS  
Orig 08101

33°07'N-98°33'W

# GRAHAM MUNI (RPH)

## RNAV (GPS) RWY 21