

WESTMINSTER, MARYLAND

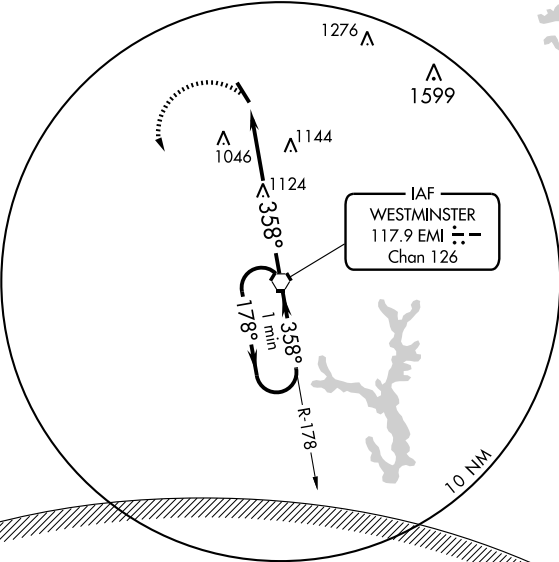
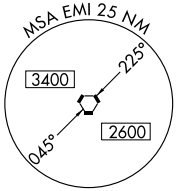
AL-5533 (FAA)

VORTAC EMI 117.9 Chan 126	APP CRS 358°	Rwy Idg 5100 TDZE 788 Apt Elev 789
---	------------------------	---

WESTMINSTER/
CARROLL COUNTY RGNL/JACK B. POAGE FIELD (DMW) **VOR RWY 34**

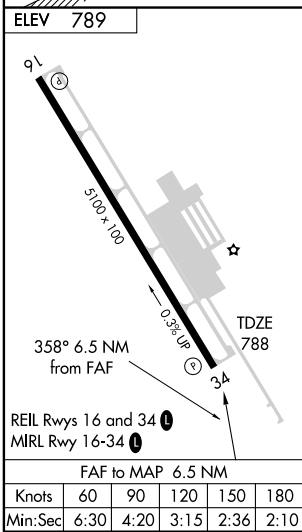
<p>▽ ▲ NA</p>	<p>MISSED APPROACH: Climbing left turn to 2900 direct EMI VORTAC and hold.</p>		
-------------------	--	--	--

AWOS-3 121.25	POTOMAC APP CON 125.525 291.625	CLNC DEL (GCO) 121.725	UNICOM 122.7 (CTAF) 0
-------------------------	---	----------------------------------	---------------------------------

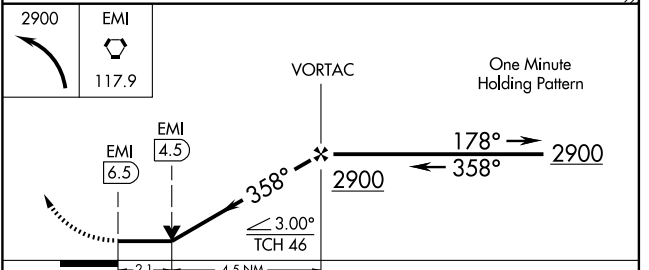


NE-3, 22 OCT 2009 to 19 NOV 2009

NE-3, 22 OCT 2009 to 19 NOV 2009



WASHINGTON DC METROPOLITAN SFRA
WARNING -- WASHINGTON DC SFRA. CTC POTOMAC APP CON



CATEGORY	A	B	C	D
S-34	1480-1	692 (700-1)	1480-2 692 (700-2)	NA
CIRCLING	1480-1	691 (700-1)	1480-2 691 (700-2)	NA

WESTMINSTER, MARYLAND
Amdt 4B 09127

WESTMINSTER/CARROLL COUNTY RGNL/JACK B. POAGE FIELD (DMW)
39°36'N - 77°00'W

VOR RWY 34