

WESTMINSTER, MARYLAND

AL-5533 (FAA)

# RNAV (GPS) RWY 34

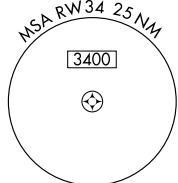
WESTMINSTER/CARROLL COUNTY RGNL/JACK B. POAGE FIELD (DMW)

APP CRS <b>339°</b>	Rwy Idg <b>5100</b>
	TDZE <b>788</b>
	Apt Elev <b>789</b>

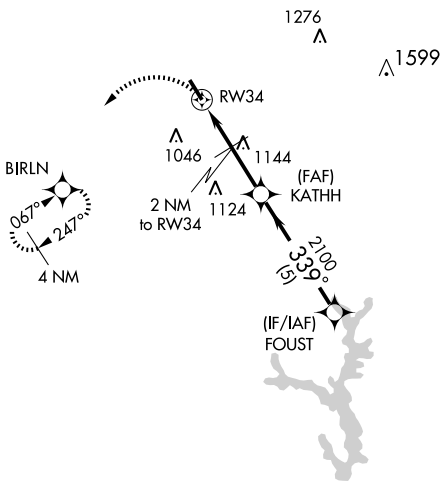
**▽** GPS or RNP - 0.3 required.  
**▲** NA DME/DME RNP - 0.3 NA.

MISSED APPROACH: Climbing left turn to 3000 direct BIRLN WP and hold.

AWOS-3 <b>121.25</b>	POTOMAC APP CON <b>125.525 291.625</b>	CLNC DEL (GCO) <b>121.725</b>	UNICOM <b>122.7 (CTAF) 0</b>
-------------------------	---	----------------------------------	---------------------------------

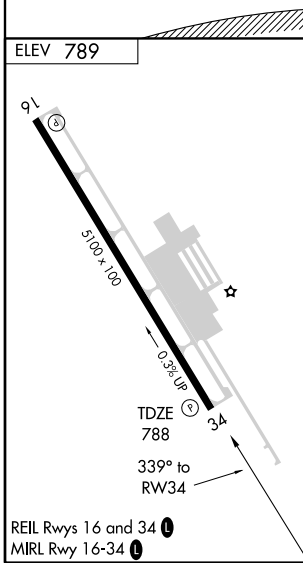


## RADAR REQUIRED



NE-3, 22 OCT 2009 to 19 NOV 2009

NE-3, 22 OCT 2009 to 19 NOV 2009



WASHINGTON DC METROPOLITAN SFRA  
**WARNING -- WASHINGTON DC SFRA.**  
 CTC POTOMAC APP CON

3000	BIRLN	2 NM to RW34	KATHH	FOUST
		1.1 NM to RW34	2100	2500
	RW34	1460	2100	
		1.1 0.9 2 NM	≤ 2.98° TCH 46	5 NM
CATEGORY	A	B	C	D
LNAV MDA	1160 - 1		372 (400-1)	NA
CIRCLING	1240 - 1		451 (500-1)	1240 - 1½ 451 (500-1½)

WESTMINSTER, MARYLAND  
Orig-B 09127

WESTMINSTER/CARROLL COUNTY RGNL/JACK B. POAGE FIELD (DMW)  
39°36'N - 77°00'W

# RNAV (GPS) RWY 34