

WESTMINSTER, MARYLAND

AL-5533 (FAA)

WAAS CH <b>65607</b> <b>W16A</b>	APP CRS <b>159°</b>	Rwy ldg TDZE Apt Elev	<b>5100</b> <b>789</b> <b>789</b>
--	------------------------	-----------------------------	---

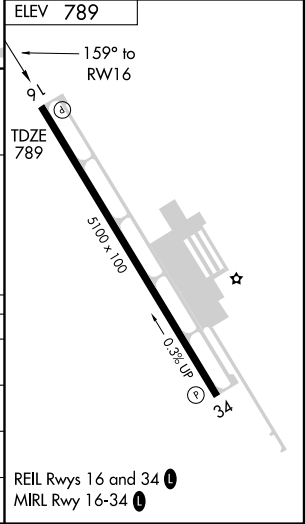
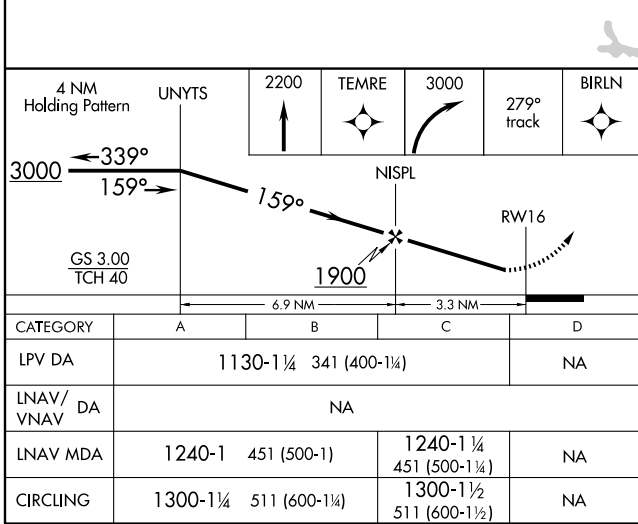
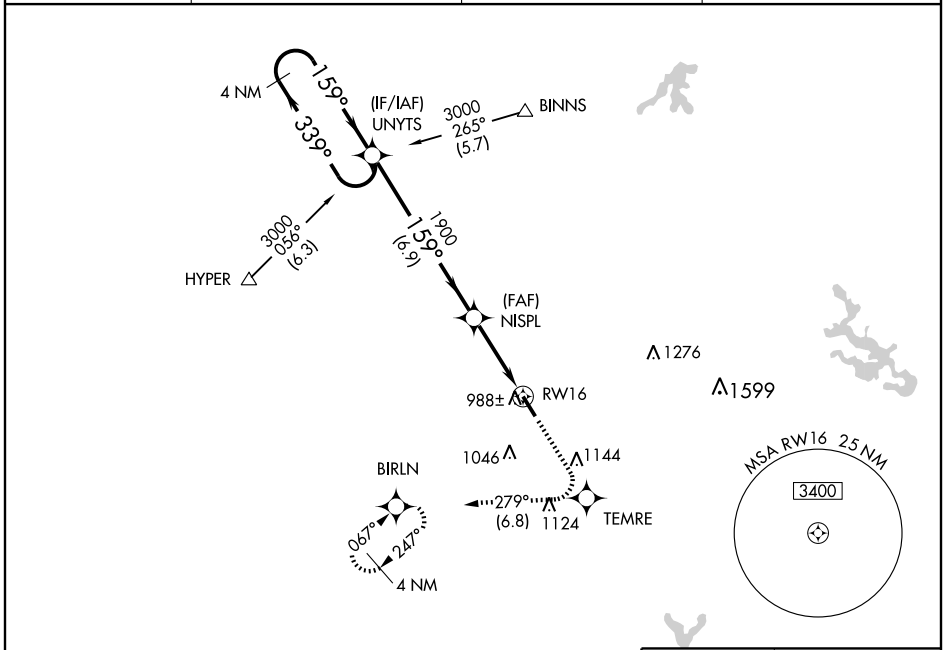
WESTMINSTER/

# RNAV (GPS) RWY 16

CARROLL COUNTY RGNL/JACK B. POAGE FIELD (DMW)

DME/DME RNP - 0.3 NA.		MISSED APPROACH: Climb to 2200 direct TEMRE then climbing right turn to 3000 via 279° track to BIRLN and hold.	
-----------------------	--	--	--

AWOS-3 <b>121.25</b>	POTOMAC APP CON <b>125.525 291.625</b>	CLNC DEL (GCO) <b>121.725</b>	UNICOM <b>122.7 (CTAF)</b>
-------------------------	---	----------------------------------	-------------------------------



WESTMINSTER, MARYLAND  
Amdt 1 08213

WESTMINSTER/CARROLL COUNTY RGNL/JACK B. POAGE FIELD (DMW)  
39°36'N - 77°00'W

# RNAV (GPS) RWY 16

NE-3, 22 OCT 2009 to 19 NOV 2009

NE-3, 22 OCT 2009 to 19 NOV 2009