

CRESTON, IOWA

AL-5531 (FAA)

RNAV (GPS) RWY 34

CRESTON MUNI (CSQ)

APP CRS 341°	Rwy Idg 4901
	TDZE 1296
	Apt Elev 1300

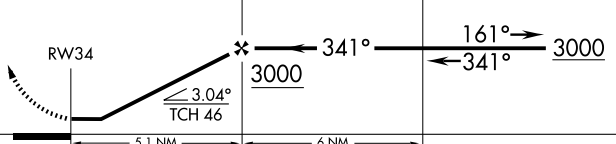
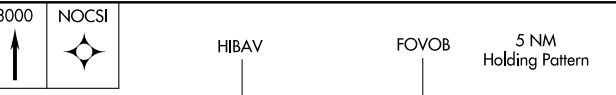
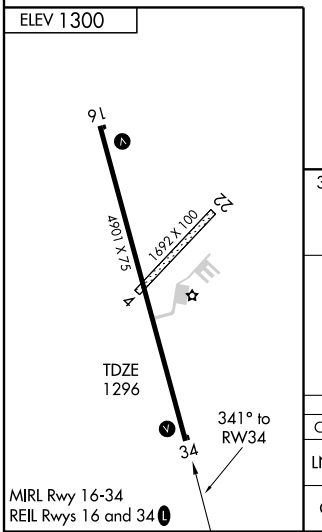
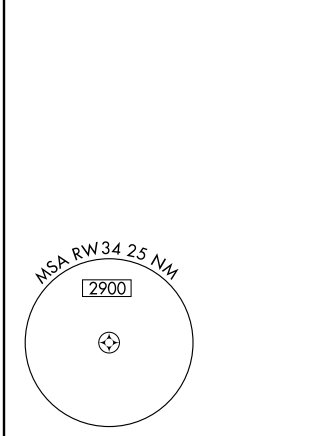
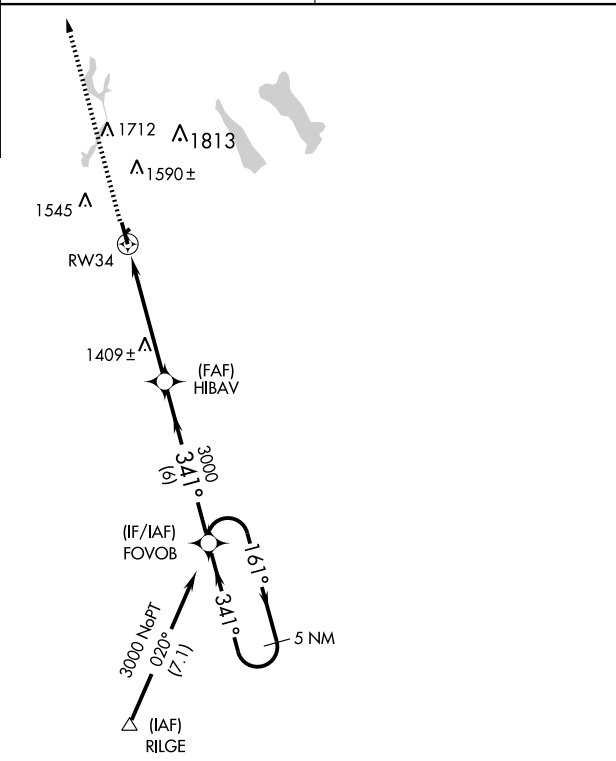
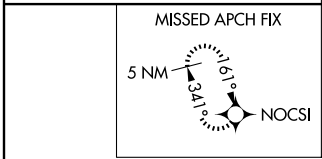
⚠ DME/DME RNP-0.3 NA.
⚠ Circling NA for CATs B and C west of Rwy 16-34. Circling NA to Rwy 4-22.
 If local altimeter setting not received, use Des Moines Intl altimeter setting and increase all MDAs 160 feet.
 When VGSI inoperative, circling Rwy 16 NA at night.
 Visibility reduction by helicopters NA.

MISSED APPROACH: Climb to 3000 direct NOCSI and hold.

AWOS-3
124.75

MINNEAPOLIS CENTER
125.65 306.95

UNICOM
122.8 (CTAF) **📻**



CATEGORY	A	B	C	D
LNAV MDA	1660-1 364 (400-1)			NA
CIRCLING	1720-1 420 (500-1)	1760-1 460 (500-1)	1760-1½ 460 (500-1½)	NA

CRESTON, IOWA
Orig 08157

41°01'N-94°22'W

CRESTON MUNI (CSQ) RNAV (GPS) RWY 34

NC-3, 22 OCT 2009 to 19 NOV 2009

NC-3, 22 OCT 2009 to 19 NOV 2009