

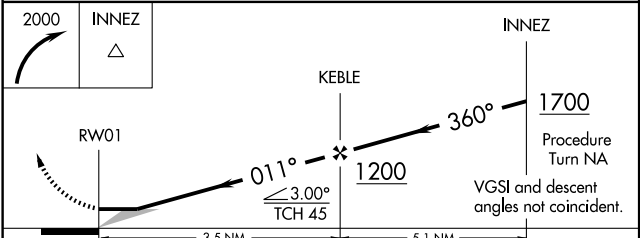
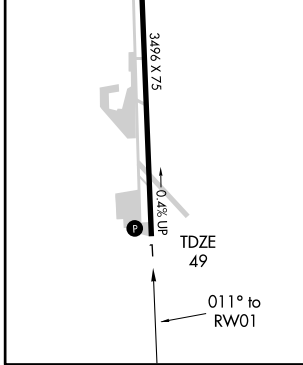
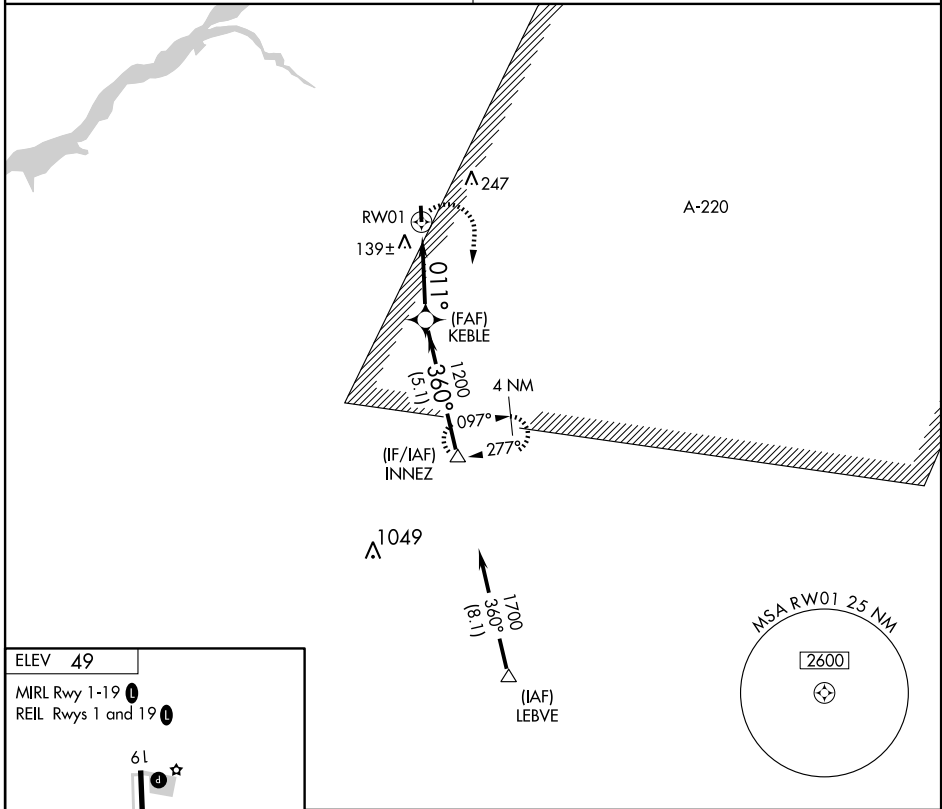
# RNAV (GPS) RWY 1

LUMBERTON / FLYING W (N14)

APP CRS <b>011°</b>	Rwy Idg <b>3496</b> TDZE <b>49</b> Apt Elev <b>49</b>
------------------------	---

<p><b>▽</b> Use McGuire AFB altimeter setting; if not received, procedure NA.</p> <p><b>△</b> NA GPS RNP-0.3 required. DME/DME RNP-0.3 NA.</p>	<p>MISSED APPROACH: Climbing right turn to 2000 direct INNEZ WP and hold.</p>
--	---

<p>McGUIRE APP CON <b>124.15 363.8</b></p>	<p>UNICOM <b>122.8 (CTAF) 0</b></p>
--	---



CATEGORY	A	B	C	D
LNNAV MDA	460-1	411 (500-1)		NA
CIRCLING	500-1	451 (500-1)		NA

NE-2, 22 OCT 2009 to 19 NOV 2009

NE-2, 22 OCT 2009 to 19 NOV 2009