

CROSSETT, ARKANSAS

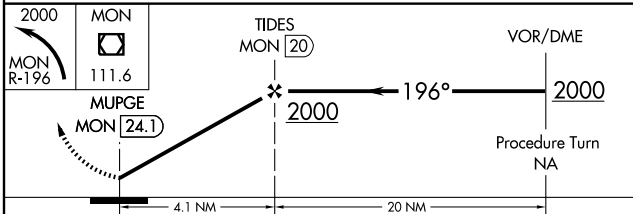
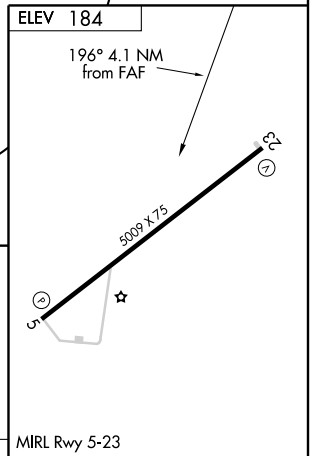
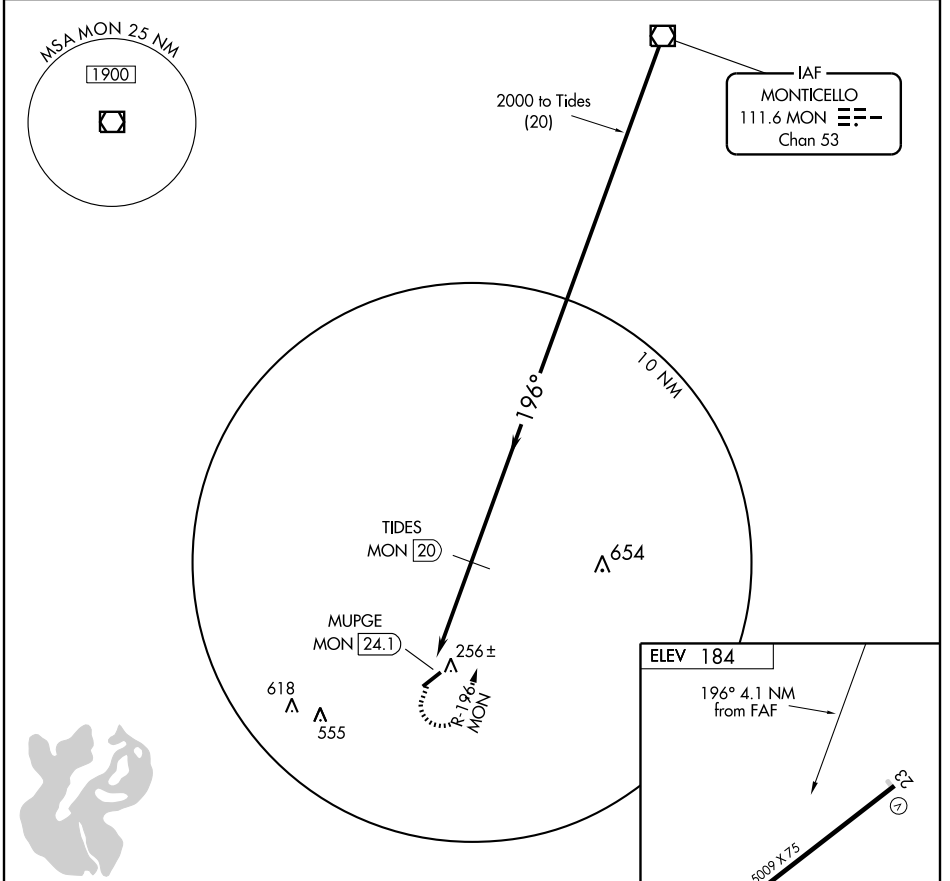
AL-5527 (FAA)

VOR/DME MON 111.6 Chan 53	APP CRS 196°	Rwy Idg TDZE Apt Elev	N/A N/A 184
---	------------------------	-----------------------------	--

VOR/DME-A
CROSSETT/ Z M JACK STELL FIELD (CRT)

NA Use Monroe, LA altimeter setting; if not received, use El Dorado altimeter setting and increase all MDAs 20 feet. MISSED APPROACH: Climbing left turn to 2000 via MON R-196 to MON VOR/DME.

MEMPHIS CENTER **135,875 269,35** UNICOM **122.8** (CTAF)



CATEGORY	A	B	C	D	Knots	60	90	120	150	180
CIRCLING	1020-1 837 (900-1)	1020-1¼ 837 (900-1¼)	1020-2½ 837 (900-2½)	NA	Min:Sec					

CROSSETT, ARKANSAS
Orig-C 08269

33°11'N-91°53'W

CROSSETT/ Z M JACK STELL FIELD (CRT)
VOR/DME-A

SC-1, 22 OCT 2009 to 19 NOV 2009

SC-1, 22 OCT 2009 to 19 NOV 2009