

# RNAV (GPS) RWY 28

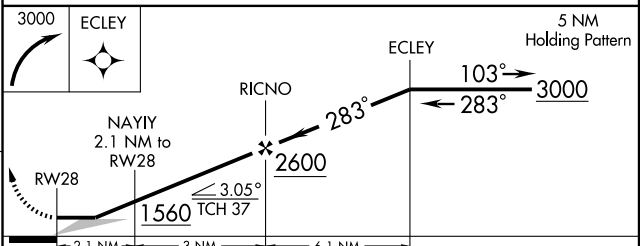
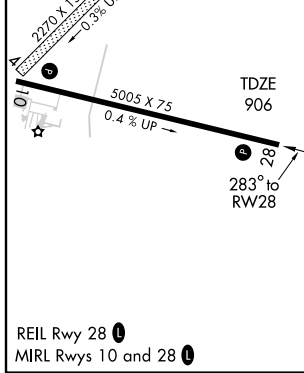
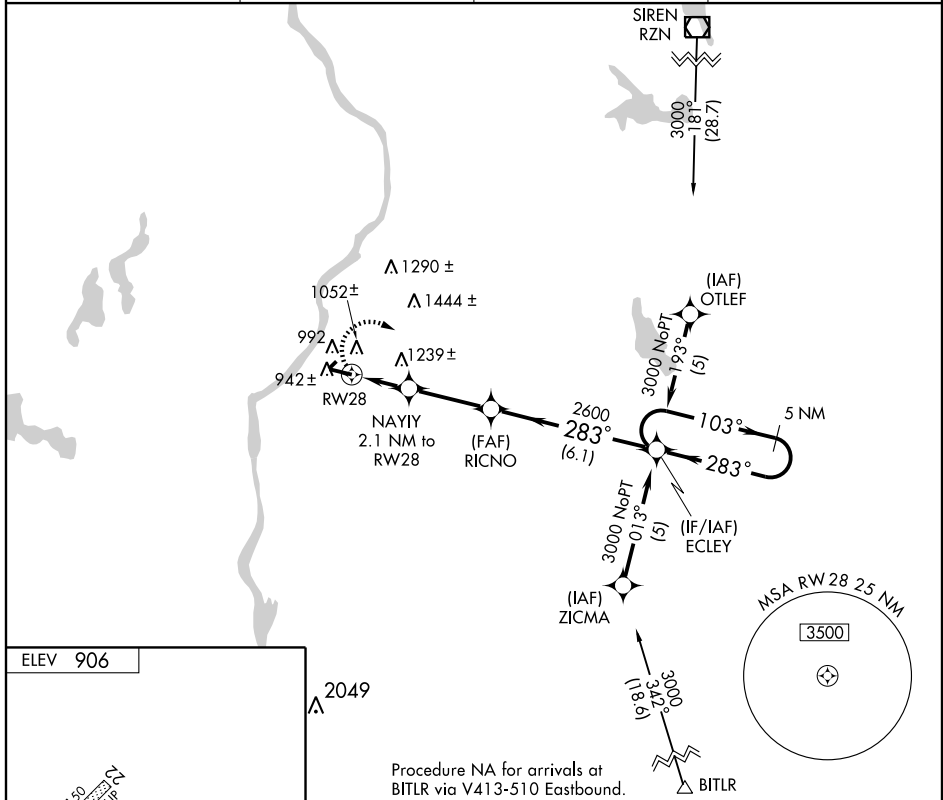
OSCEOLA/ L.O. SIMENSTAD MUNI (OEO)

APP CRS <b>283°</b>	Rwy Idg <b>5005</b>
	TDZE <b>906</b>
	Apt Elev <b>906</b>

**⚠** If local altimeter setting not received, use Anoka County-Blaine Arpt (Janes Field) altimeter setting and increase all MDAs 60 feet.  
**⚠** Circling to Rwy 04-22 NA at night. DME/DME PNP-0.3 NA.

**MISSED APPROACH:** Climbing right turn to 3000 direct ECLEY and hold.

AWOS-3 <b>119.925</b>	MINNEAPOLIS APP CON <b>121.2</b>	GCO <b>121.725</b>	CTAF <b>122.90</b>
--------------------------	-------------------------------------	-----------------------	-----------------------



CATEGORY	A	B	C	D
LNAV MDA	1480-1	574 (600-1)	1480-1½ 574 (600-1½)	NA
CIRCLING	1480-1	574 (600-1)	1500-1½ 594 (600-1½)	NA

EC-3, 22 OCT 2009 to 19 NOV 2009

EC-3, 22 OCT 2009 to 19 NOV 2009