

UNION CITY, TENNESSEE

AL-5525 (FAA)

VORTAC DYR 116.8 Chan 115	APP CRS 033°	Rwy Idg TDZE Apt Elev	N/A N/A 335
---	------------------------	-----------------------------	--

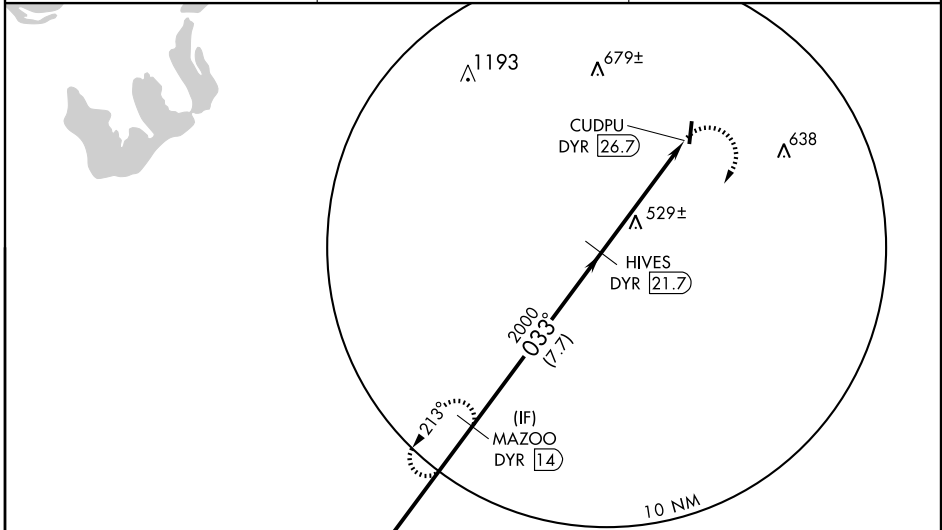
VOR/DME-A

UNION CITY/EVERETT-STEWART RGNL (UCY)

NA When local altimeter setting not received, use Dyersburg Rgnl altimeter setting and increase all MDAs 80 feet.

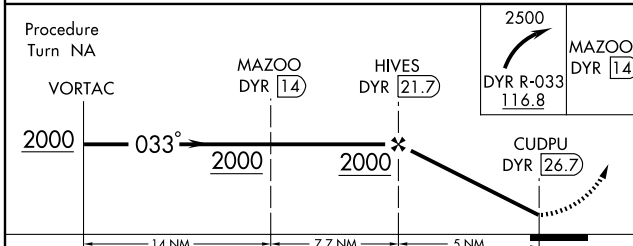
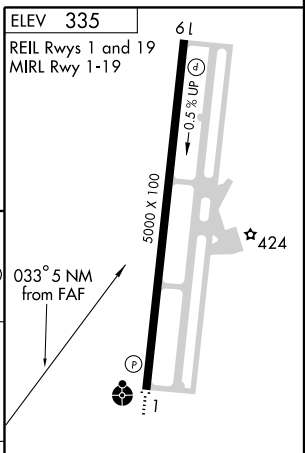
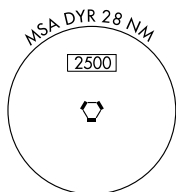
MISSED APPROACH: Climbing right turn to 2500 via DYR VORTAC R-033 to MAZOO/14 DME and hold.

AWOS-3 135.325	MEMPHIS CENTER 133.65 292.15	UNICOM 122.7 (CTAF)
--------------------------	--	-------------------------------



Procedure NA for arrivals on DYR VORTAC airway radials 018 CW 083

IAF
DYERSBURG
116.8 DYR Chan 115



CATEGORY	A	B	C	D	Knots	60	90	120	150	180
CIRCLING	780-1 445 (500-1)	800-1¼ 465 (500-1¼)	800-1½ 465 (500-1½)	900-2 565 (600-2)	Min:Sec					

UNION CITY, TENNESSEE
Amdt 8 07354

36° 23'N-88° 59'W

UNION CITY/EVERETT-STEWART RGNL (UCY)
VOR/DME-A

SE-1, 22 OCT 2009 to 19 NOV 2009

SE-1, 22 OCT 2009 to 19 NOV 2009