

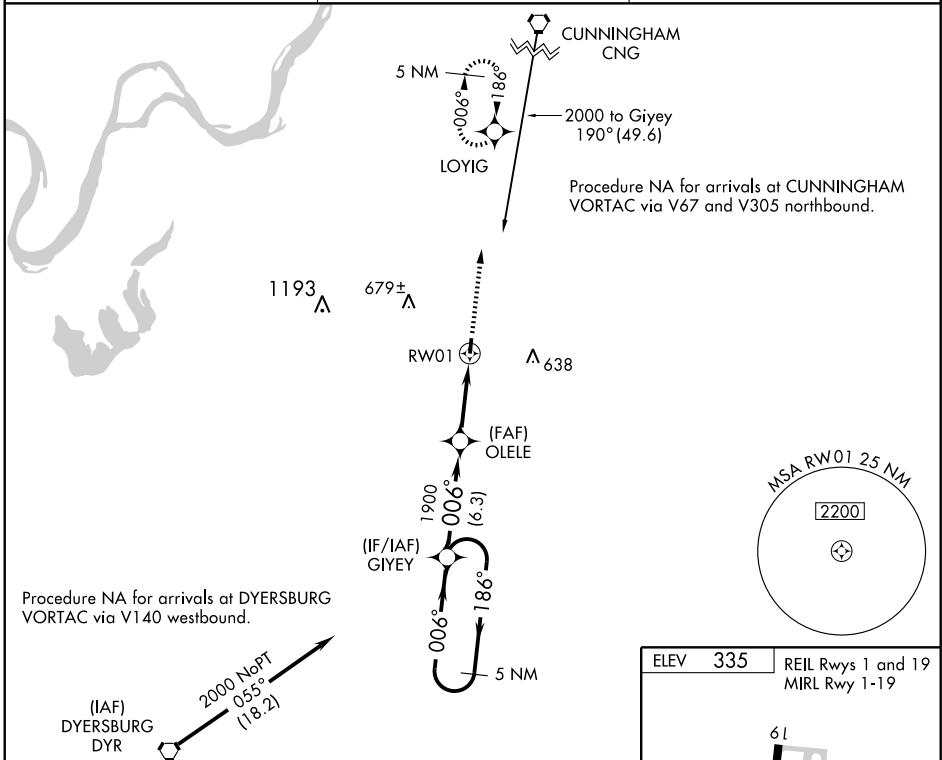
WAAS CH 40099 W01A	APP CRS 006°	Rwy ldg 5000 TDZE 335 Apt Elev 335
--	------------------------	---

RNAV (GPS) RWY 1

UNION CITY/EVERETT-STEWART RGNL (UCY)

<p>▼ DME/DME RNP-0.3 NA. Inoperative table does not apply to LPV. ▲ If local altimeter setting not received, use Dyersburg Rgnl altimeter setting and increase all DA/MDAs 80 feet. VDP NA with Dyersburg Rgnl altimeter setting.</p>	<p>ODALS </p>	<p>MISSED APPROACH: Climb to 2900 direct LOYIG and hold.</p>
---	-------------------	--

AWOS-3 135.325	MEMPHIS CENTER 133.65 292.15	UNICOM 122.7 (CTAF) 0
--------------------------	--	---------------------------------

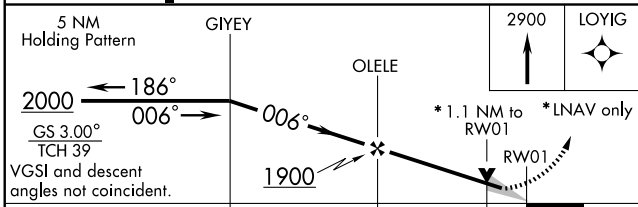


Procedure NA for arrivals at DYERSBURG VORTAC via V140 westbound.

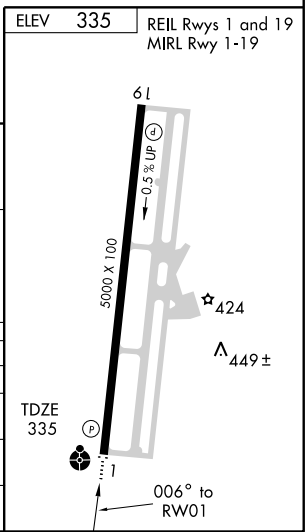
Procedure NA for arrivals at CUNNINGHAM VORTAC via V67 and V305 northbound.

SE-1, 22 OCT 2009 to 19 NOV 2009

SE-1, 22 OCT 2009 to 19 NOV 2009



CATEGORY	A	B	C	D
LPV DA		585- ³ / ₄	250 (300- ³ / ₄)	
LNAV/VNAV DA		NA		
LNAV MDA	700- ³ / ₄	365 (400- ³ / ₄)		700-1 ¹ / ₄ 365 (400-1 ¹ / ₄)
CIRCLING	760-1 425 (500-1)	800-1 465 (500-1)	800-1 ¹ / ₂ 465 (500-1 ¹ / ₂)	900-2 565 (600-2)



RNAV (GPS) RWY 1