

UNION CITY, TENNESSEE

AL-5525 (FAA)

LOC I-UCY 109.7	APP CRS 006°	Rwy Idg 5000
		TDZE 335
		Apt Elev 335

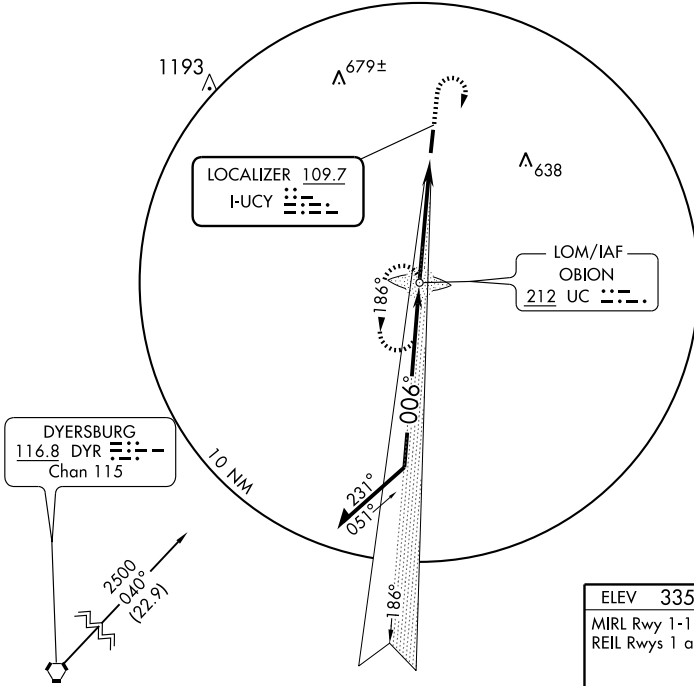
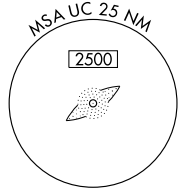
ILS or LOC RWY 1

UNION CITY/EVERETT-STEWART RGNL (UCY)

<p>▼ Inoperative table does not apply to S-LOC 1</p> <p>▲ NA Cat. C.</p>	<p>ODALS</p>	<p>MISSED APPROACH: Climb to 1300 then climbing right turn to 2500 direct OBION LOM and hold.</p>

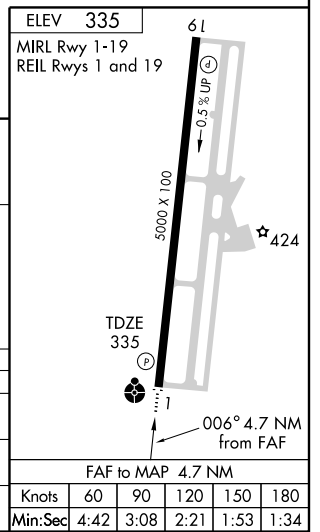
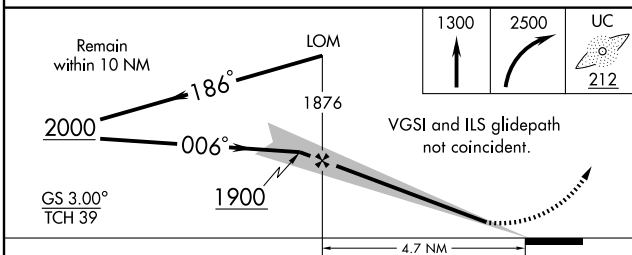
<p>AWOS-3</p> <p>135.325</p>	<p>MEMPHIS CENTER</p> <p>133.65 292.15</p>	<p>UNICOM</p> <p>122.7 (CTAF)</p>
-------------------------------------	---	--

ADF REQUIRED



SE-1, 22 OCT 2009 to 19 NOV 2009

SE-1, 22 OCT 2009 to 19 NOV 2009



CATEGORY	A	B	C	D
S-ILS 1	535-¾ 200 (200-¾)			
S-LOC 1	760-¾	425 (500-¾)	760-1¼	425 (500-1¼)
CIRCLING	760-1 425 (500-1)	800-1 465 (500-1)	800-1½ 465 (500-1½)	900-2 565 (600-2)

UNION CITY, TENNESSEE
Orig-A 08157

UNION CITY/EVERETT-STEWART RGNL (UCY)
36° 23'N-88° 59'W
ILS or LOC RWY 1