

EUNICE, LOUISIANA

AL-5524 (FAA)

VOR/DME-A

EUNICE (4R7)

VORTAC LFT 109.8 Chan 35	APP CRS 303°	Rwy Idg TDZE Apt Elev	N/A N/A 42
---------------------------------------	------------------------	-----------------------------	------------------

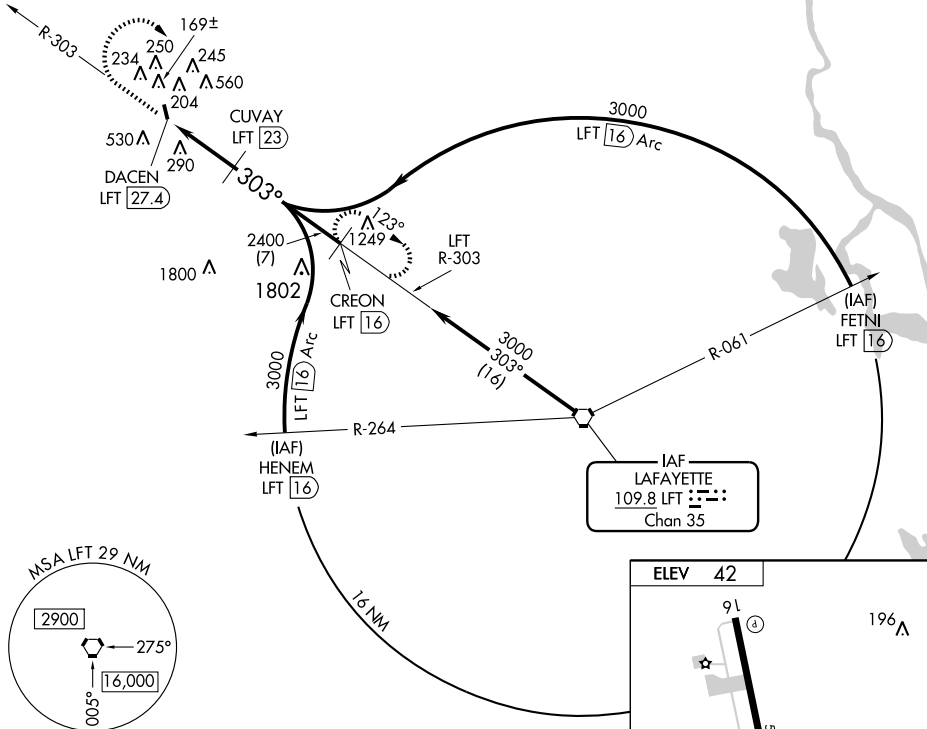
Use Lafayette Rgnl altimeter setting.
NA

MISSED APPROACH: Climb to 1000 then climbing right turn to 3000 via LFT R-303 to CREON/LFT 16 DME and hold.

LAFAYETTE APP CON ★
128.7 268.7

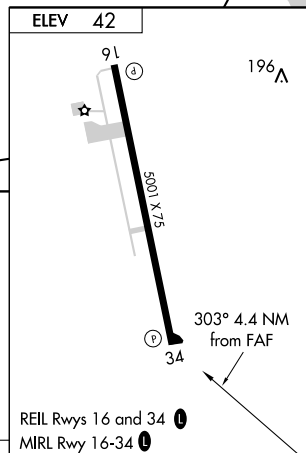
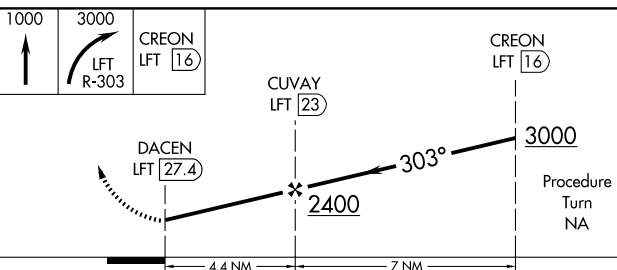
GCO
135.075

UNICOM
122.8 (CTAF)



SC-4, 22 OCT 2009 to 19 NOV 2009

SC-4, 22 OCT 2009 to 19 NOV 2009



CATEGORY	A	B	C	D	Knots	60	90	120	150	180
CIRCLING	800-1 758 (800-1)	800-1¼ 758 (800-1¼)	800-2¼ 758 (800-2¼)	NA	Min:Sec					

EUNICE, LOUISIANA
Amdt 3 09295

30°28'N-92°25'W

VOR/DME-A

EUNICE (4R7)