

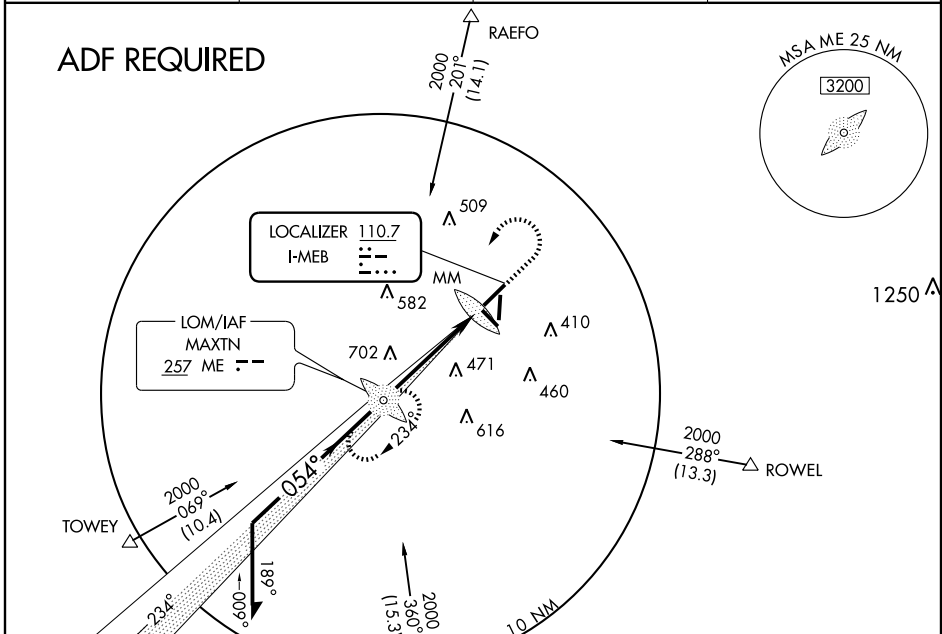
LOC I-MEB 110.7	APP CRS 054°	Rwy Idg TDZE Apt Elev	6503 216 220
---------------------------	------------------------	-----------------------------	---

ILS or LOC RWY 5
MAXTON/LAURINBURG-MAXTON (MEB)

When local altimeter setting not received, use Lumberton altimeter setting and increase DA to 473 feet and increase all MDA 60 feet. Increase S-LOC 5 Cat. D visibility ¼ mile. ADF REQUIRED.

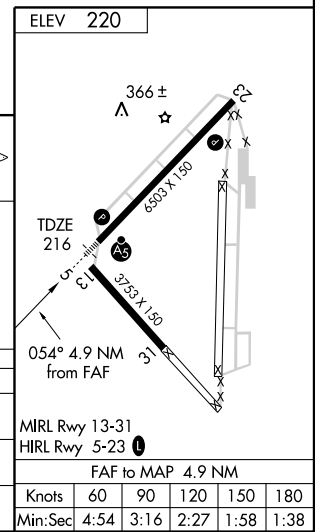
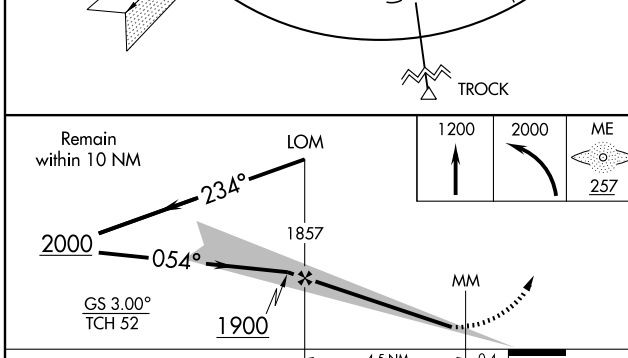
MALSRL
MISSED APPROACH: Climb to 1200 then climbing left turn to 2000 direct ME LOM and hold.

ASOS 134.125	FAYETTEVILLE APP CON 127.8 343.725	GCO 135.075	UNICOM 122.8 (CTAF)
------------------------	--	-----------------------	-------------------------------



SE-2, 22 OCT 2009 to 19 NOV 2009

SE-2, 22 OCT 2009 to 19 NOV 2009



CATEGORY	A	B	C	D
S-ILS 5	416-½ 200 (200-½)			
S-LOC 5	720-½ 504 (500-½)	720-1 504 (500-1)		
CIRCLING	720-1 500 (500-1)	720-1½ 500 (500-1½)	780-2 560 (600-2)	