

# VOR RWY 33

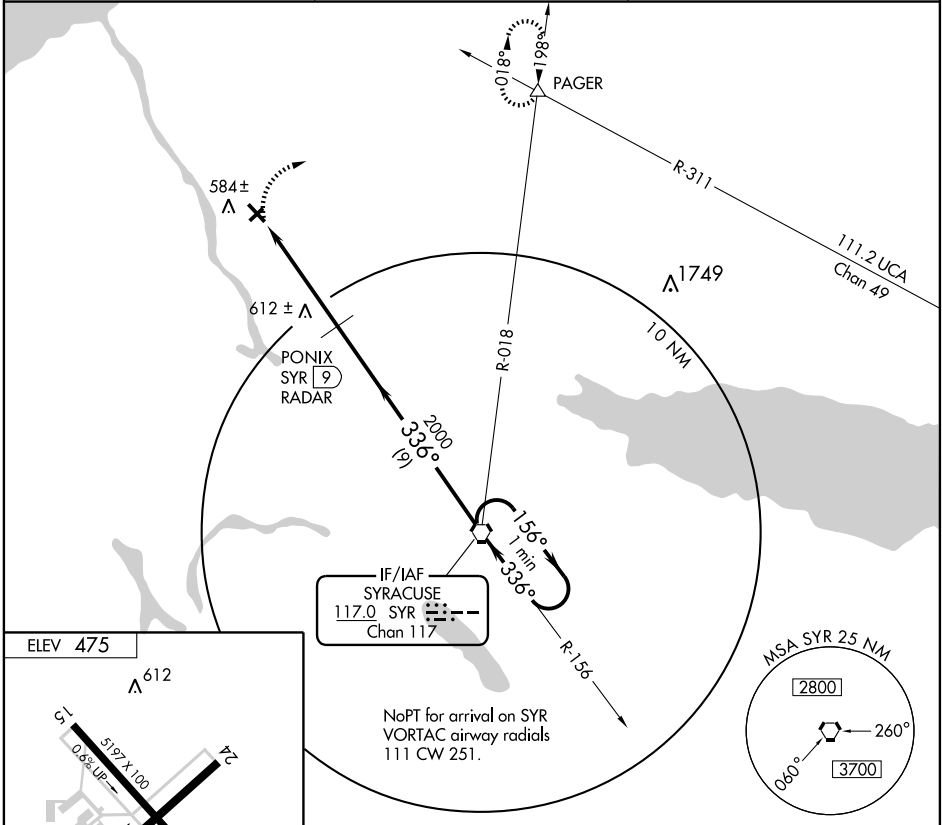
FULTON/ OSWEGO COUNTY (FZY)

VORTAC SYR <b>117.0</b> Chan <b>117</b>	APP CRS <b>336°</b>	Rwy Idg TDZE Apt Elev	<b>5197</b> <b>475</b> <b>475</b>
---	------------------------	-----------------------------	---

**▽** DME or Radar Required. Visibility reduction by helicopters NA.  
**▲** When local altimeter setting not received; use Syracuse Hancock  
 Inlt altimeter setting and increase all MDA 60 feet and increase  
 S-33 Cat D visibility and Circling Cat C and D visibilities ¼ mile.

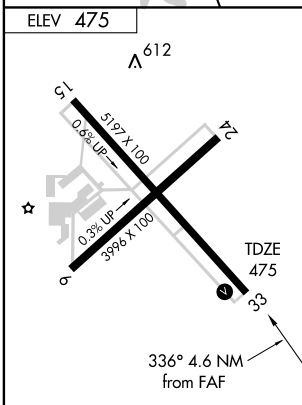
MISSED APPROACH: Climbing right turn to 3000 via  
 heading 090° and SYR R-018 to PAGER INT and hold.

ASOS <b>119.275</b>	SYRACUSE APP CON <b>134.275 279.6</b>	UNICOM <b>123.0 CTAF 0</b>
------------------------	--	-------------------------------



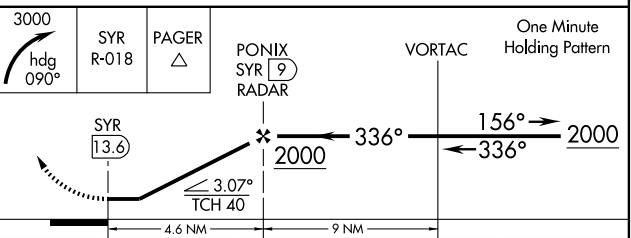
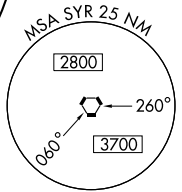
NE-2, 22 OCT 2009 to 19 NOV 2009

NE-2, 22 OCT 2009 to 19 NOV 2009



IF/IAF  
 SYRACUSE  
 117.0 SYR  
 Chan 117

NoPT for arrival on SYR  
 VORTAC airway radials  
 111 CW 251.



REIL Rwy 15 and 33  
 MIRL Rwy 6-24 and 15-33

FAF to MAP 4.6 NM					
Knots	60	90	120	150	180
Min:Sec	4:36	3:04	2:18	1:50	1:32

CATEGORY	A	B	C	D
S-33	880-1	405 (500-1)	880-1¼	405 (500-1¼)
CIRCLING	1000-1	525 (600-1)	1000-1½	565 (600-2)