

# RNAV (GPS) RWY 24

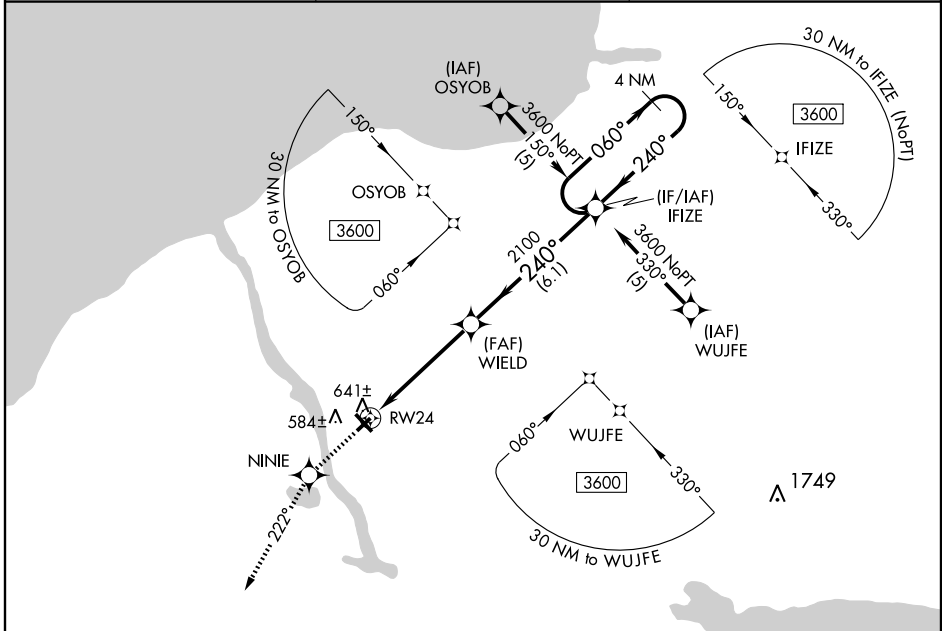
FULTON/OSWEGO COUNTY (FZY)

APP CRS <b>240°</b>	Rwy Idg <b>3996</b>
	TDZE <b>469</b>
	Apt Elev <b>475</b>

**⚠** DME/DME RNP -0.3 NA. Visibility reduction by helicopters NA. When local altimeter setting not received, use Syracuse Hancock Intl altimeter setting and increase all MDA 60 feet and LNAV Cat C and D visibility ¼ mile. VDP NA when using Syracuse Hancock Intl altimeter setting.

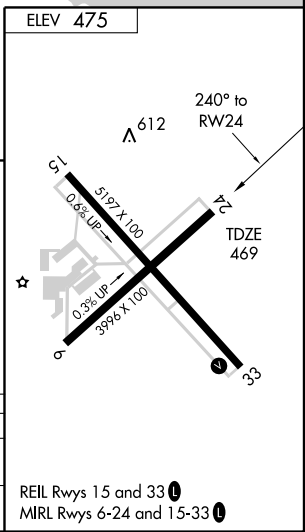
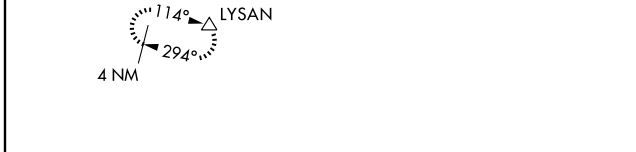
**MISSED APPROACH:** Climb to 3000 direct NINIE and via track 222° to LYSAN and hold.

ASOS <b>119.275</b>	SYRACUSE APP CON <b>134.275 279.6</b>	UNICOM <b>123.0 CTAF 0</b>
------------------------	--	-------------------------------



NE-2, 22 OCT 2009 to 19 NOV 2009

NE-2, 22 OCT 2009 to 19 NOV 2009



3000	NINIE	trk 222°	LYSAN	
				4 NM Holding Pattern
				IFIZE
				WIELD
				3600
				2100
				3.04° TCH 40
				1.4 NM
				3.5 NM
				6.1 NM
CATEGORY	A	B	C	D
LNAV MDA	960-1	491 (500-1)	960-1½ 491 (500-1¼)	960-1½ 491 (500-1½)
CIRCLING	1000-1	525 (600-1)	1000-1½ 525 (600-1½)	1040-2 565 (600-2)

REIL Rwy 15 and 33  
MIRL Rwy 6-24 and 15-33