

FULTON, NEW YORK

AL-5518 (FAA)

LOC/DME I-FZY 110.9 Chan 46	APP CRS 330°	Rwy Idg 5197 TDZE 475 Apt Elev 475
---	------------------------	---

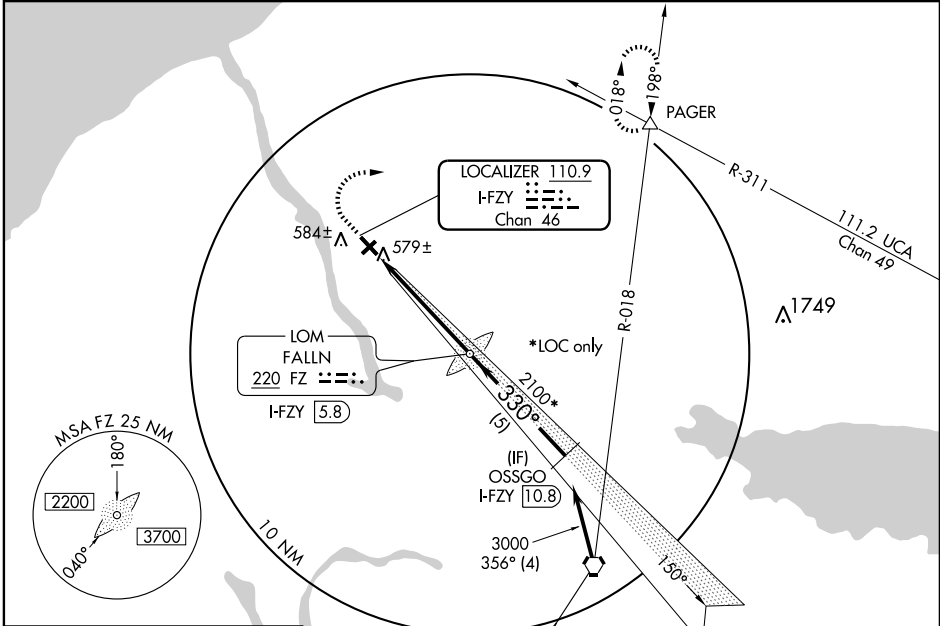
ILS or LOC RWY 33

FULTON/OSWEGO COUNTY (FZY)

V Visibility reduction by helicopters NA.
NA When local altimeter setting not received, use Syracuse Hancock Intl altimeter setting and increase all DA 52 feet and all MDA 60 feet; increase S-LOC 33 Cat C visibility ¼ mile.

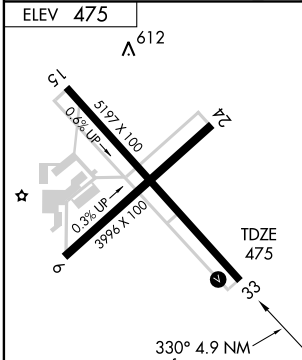
MISSED APPROACH: Climb to 1100, then climbing right turn to 3000 via heading 090° and SYR VORTAC R-018 to PAGER INT and hold.

ASOS 119.275	SYRACUSE APP CON 134.275 279.6	UNICOM 123.0 (CTAF) 0
------------------------	--	---------------------------------



NE-2, 22 OCT 2009 to 19 NOV 2009

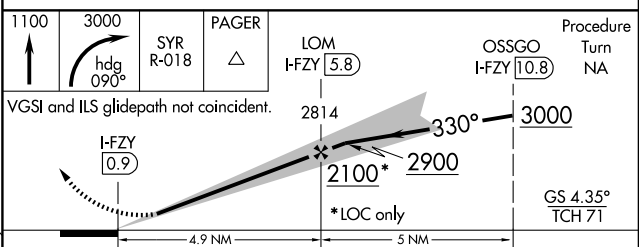
NE-2, 22 OCT 2009 to 19 NOV 2009



ELEV 475	A 612
REIL Rwy 15 and 33	MIRL Rwy 6-24 and 15-33
FAF to MAP 4.9 NM	
Knots	60 90 120 150 180
Min:Sec	4:54 3:16 2:27 1:58 1:38

DME REQUIRED

IAF SYRACUSE 117.0 SYR (Chan 117)



CATEGORY	A	B	C	D
S-ILS 33	725-1 250 (300-1)	NA		
S-LOC 33	840-1 365 (400-1)			840-1¼ 365 (400-1¼)
CIRCLING	1000-1	525 (600-1)	1000-1½ 525 (600-1½)	1040-2 565 (600-2)

FULTON, NEW YORK
Origin-A 09211

43°21'N - 76°23'W

ILS or LOC RWY 33