

# RNAV (GPS) RWY 5

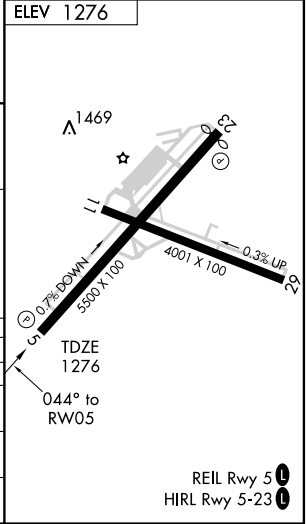
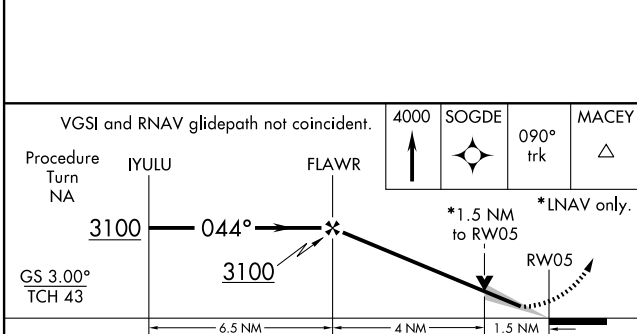
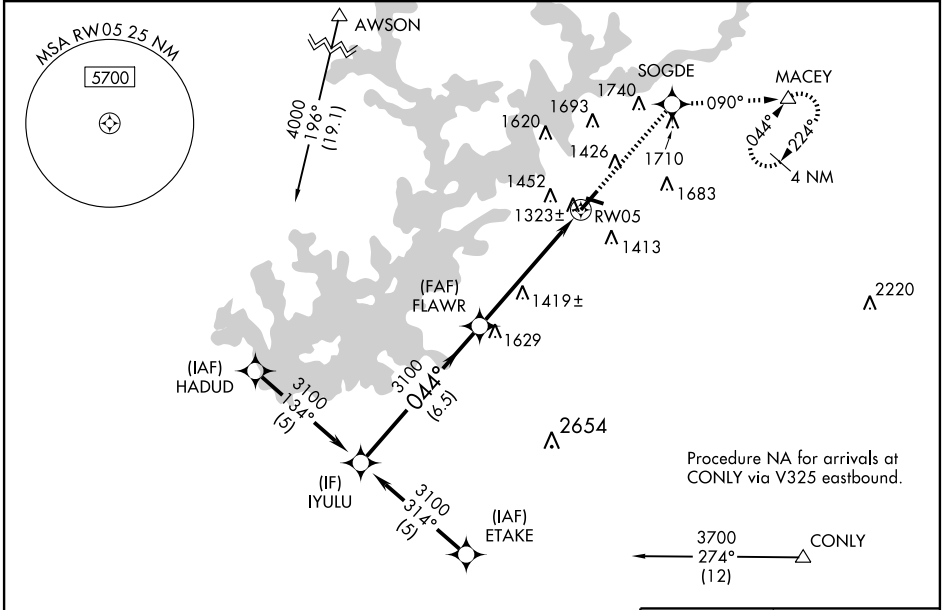
GAINESVILLE/ LEE GILMER MEMORIAL (GVL)

WAAS CH <b>42605</b> W05A	APP CRS <b>044°</b>	Rwy Idg TDZE <b>1276</b> Apt Elev <b>1276</b>
---------------------------------	------------------------	---

**⚠** For uncompensated Baro-VNAV systems, LNAV/VNAV NA below -17° C (2° F) or above 46° C (114° F). DME/DME RNP-0.3 NA. When local altimeter setting not received, use Jefferson altimeter setting and increase all DA/MDA 80 feet, LPV and LNAV/VNAV all Cats visibilities ¼ mile, LNAV Cat D visibility ½ mile and Circling Cat C and D visibility ½ mile. Baro-VNAV and VDP NA when using Jefferson altimeter setting.

**MISSED APPROACH:** Climb to 4000 direct SOGDE and via 090° track to MACEY and hold, continue climb-in-hold to 4000.

ASOS <b>126.475</b>	ATLANTA APP CON * <b>132.475 291.1</b>	GCO <b>121.725</b>	UNICOM <b>123.075</b> (CTAF) <b>0</b>
------------------------	---	-----------------------	--



CATEGORY	A	B	C	D
LPV DA	1526-1		250 (300-1)	
LNAV/VNAV DA	1761-1¾		485 (500-1¾)	
LNAV MDA	1780-1	504 (600-1)	1780-1½	504 (600-1½)
CIRCLING	1880-1	604 (700-1)	1880-1¾	2060-2½
			604 (700-1¾)	784 (800-2½)

SE-4, 22 OCT 2009 to 19 NOV 2009

SE-4, 22 OCT 2009 to 19 NOV 2009