

RNAV (GPS) RWY 23

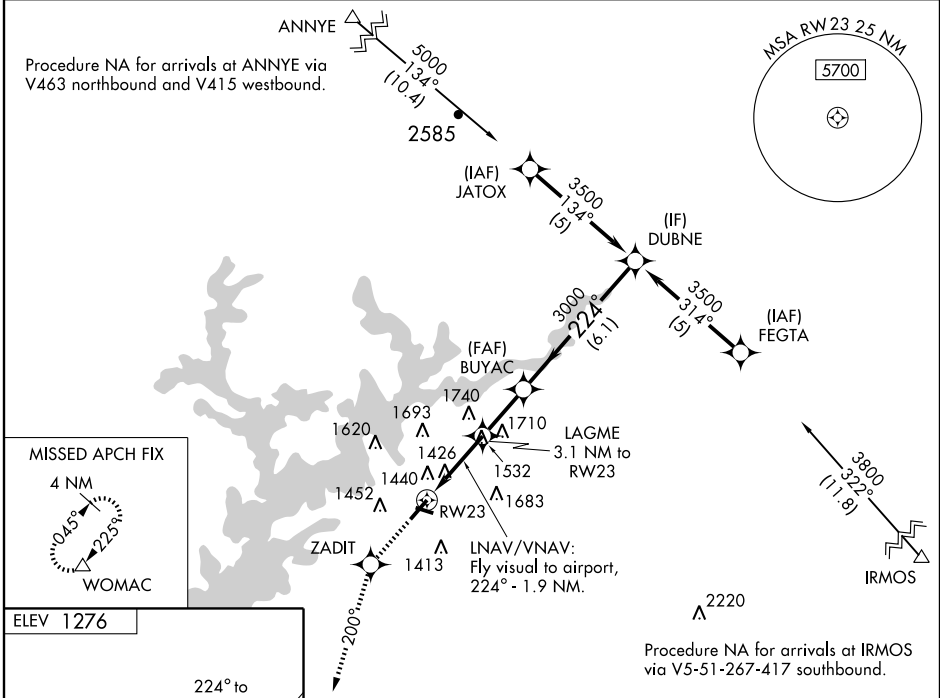
GAINESVILLE/ LEE GILMER MEMORIAL (GVL)

WAAS CH 77605 W23A	APP CRS 224°	Rwy ldg TDZE 1272 Apt Elev 1276
---------------------------------	------------------------	---

⚠ LNAV/VNAV NA when using Jefferson altimeter setting. DME/DME RNP-0.3 NA.
⚠ Visibility reduction by helicopters NA. For uncompensated Baro-VNAV systems, LNAV/VNAV NA below -17°C (2°F) or above 46°C (114°F). When local altimeter setting not received, use Jefferson altimeter setting and increase all DAs/MDAs 80 feet, LPV all Cats visibility ¼ mile, LNAV Cats C and D ½ mile and Circling Cats C and D ½ mile.

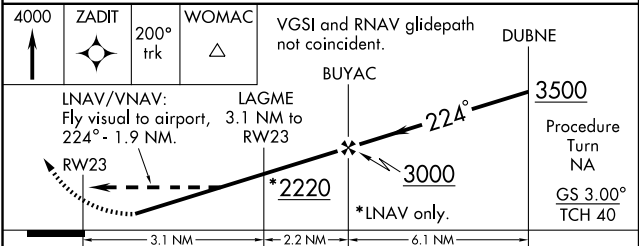
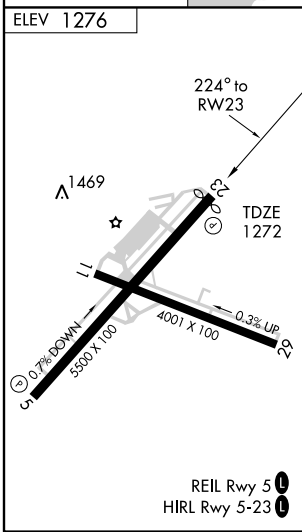
MISSED APPROACH: Climb to 4000 direct ZADIT and via 200° track to WOMAC and hold, continue climb-in-hold to 4000.

ASOS 126.475	ATLANTA APP CON * 132.475 291.1	GCO 121.725	UNICOM 123.075 (CTAF) ①
------------------------	---	-----------------------	-----------------------------------



SE-4, 22 OCT 2009 to 19 NOV 2009

SE-4, 22 OCT 2009 to 19 NOV 2009



CATEGORY	A	B	C	D
LPV DA	1720-1¾ 448 (500-1¾)			
LNAV/VNAV DA	1882-2 610 (700-2)			
LNAV MDA	1840-1 568 (600-1)	1840-1½ 568 (600-1½)	1840-1¾ 568 (600-1¾)	1840-2 568 (600-2)
CIRCLING	1880-1 604 (700-1)	1880-1¾ 604 (700-1¾)	2060-2½ 784 (800-2½)	