

# NDB RWY 5

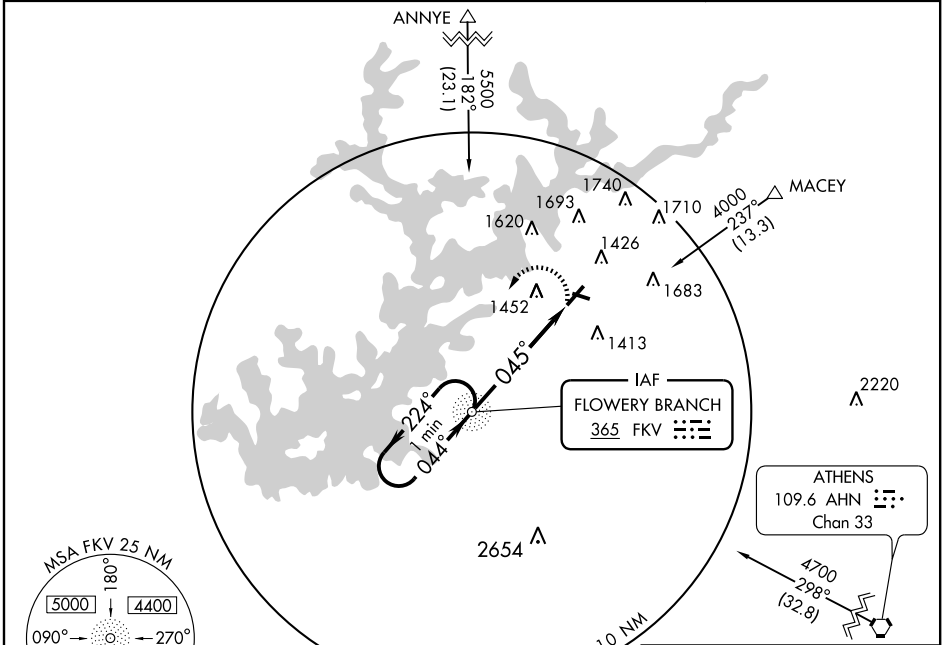
GAINESVILLE/ LEE GILMER MEMORIAL (GVL)

NDB FKV <b>365</b>	APP CRS <b>045°</b>	Rwy Idg <b>5500</b>
		TDZE <b>1276</b>
		Apt Elev <b>1276</b>

**⚠** If local altimeter setting not received, use Jefferson altimeter setting and increase all MDAs 80 feet.  
**⚠** Visibility reduction by helicopters NA.

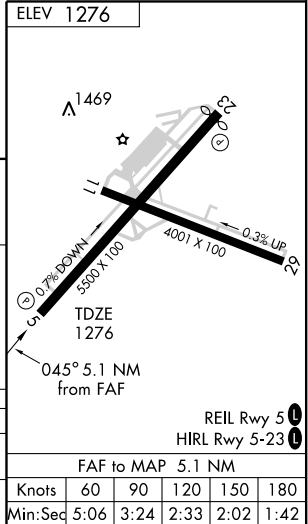
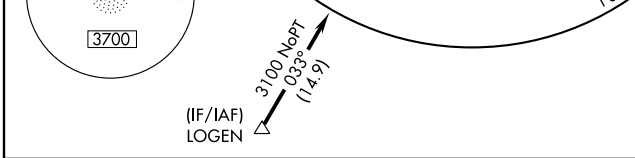
MISSED APPROACH: Climbing left turn to 3100 direct FKV NDB and hold.

ASOS <b>126.475</b>	ATLANTA APP CON* <b>132.475 291.1</b>	GCO <b>121.725</b>	UNICOM <b>123.075 (CTAF) 1</b>
------------------------	--	-----------------------	-----------------------------------



SE-4, 22 OCT 2009 to 19 NOV 2009

SE-4, 22 OCT 2009 to 19 NOV 2009



One Minute Holding Pattern	NDB	3100	FKV
3100 ← 224°	← 044° →	↙ 045°	○ 365
VGSI and descent angles not coincident.	3.31° TCH 30	5.1 NM	

CATEGORY	A	B	C	D
S-5	1820-1	544 (600-1)	1820-1½ 544 (600-1½)	1820-1¾ 544 (600-1¾)
CIRCLING	1820-1	544 (600-1)	1820-1½ 544 (600-1½)	2040-2½ 764 (800-2½)

REIL Rwy 5 1				
HIRL Rwy 5-23 1				
FAF to MAP 5.1 NM				
Knots	60	90	120	150
Min:Sec	5:06	3:24	2:33	2:02

# NDB RWY 5