

O'NEILL, NEBRASKA

AL-5515 (FAA)

VORTAC ONL 113.9 Chan 86	APP CRS 318°	Rwy Idg TDZE Apt Elev	4409 2030 2031
--	------------------------	-----------------------------	---

VOR RWY 31

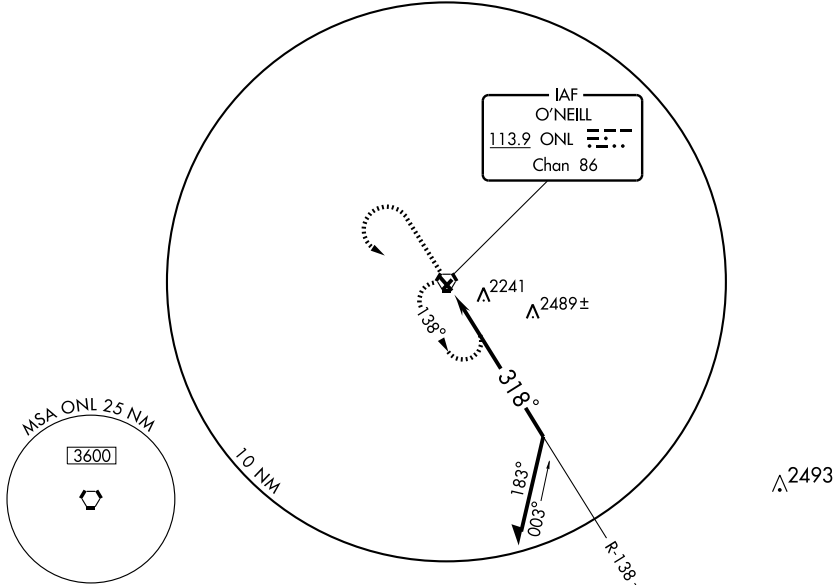
O'NEILL/ THE O'NEILL MUNI-JOHN L. BAKER FIELD (ONL)

MISSED APPROACH: Climb to 3600 then left turn direct ONL VORTAC and hold.

AWOS-3
121.125

MINNEAPOLIS CENTER
128.0 385.5

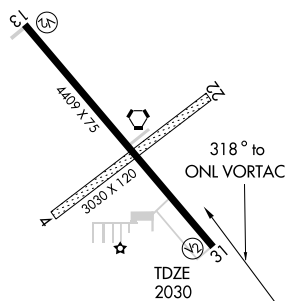
UNICOM
122.8 (CTAF) **0**



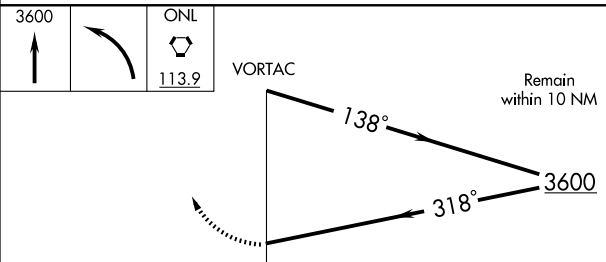
NC-2, 22 OCT 2009 to 19 NOV 2009

NC-2, 22 OCT 2009 to 19 NOV 2009

ELEV 2031



REIL Rwy 13 **0**
MIRL Rwy 13-31 **0**



Knots	60	90	120	150	180
Min:Sec					

CATEGORY	A	B	C	D
S-31	2560-1	530 (600-1)	2560-1½ 530 (600-1½)	2560-1¾ 530 (600-1¾)
CIRCLING	2560-1	529 (600-1)	2560-1½ 529 (600-1½)	2600-2 569 (600-2)

O'NEILL, NEBRASKA
Amdt 1A 03303

O'NEILL/ THE O'NEILL MUNI-JOHN L. BAKER FIELD (ONL)
42°28' N-98°41' W

VOR RWY 31