

O'NEILL, NEBRASKA

AL-5515 (FAA)

# RNAV (GPS) RWY 31

O'NEILL/ THE O'NEILL MUNI-JOHN L. BAKER FIELD (ONL)

|  |                        |                             |   |
|--|------------------------|-----------------------------|---|
| WAAS<br>CH <b>70503</b><br><b>W31A</b> | APP CRS<br><b>310°</b> | Rwy Idg<br>TDZE<br>Apt Elev | <b>4409</b><br><b>2031</b><br><b>2031</b> |
|--|------------------------|-----------------------------|---|

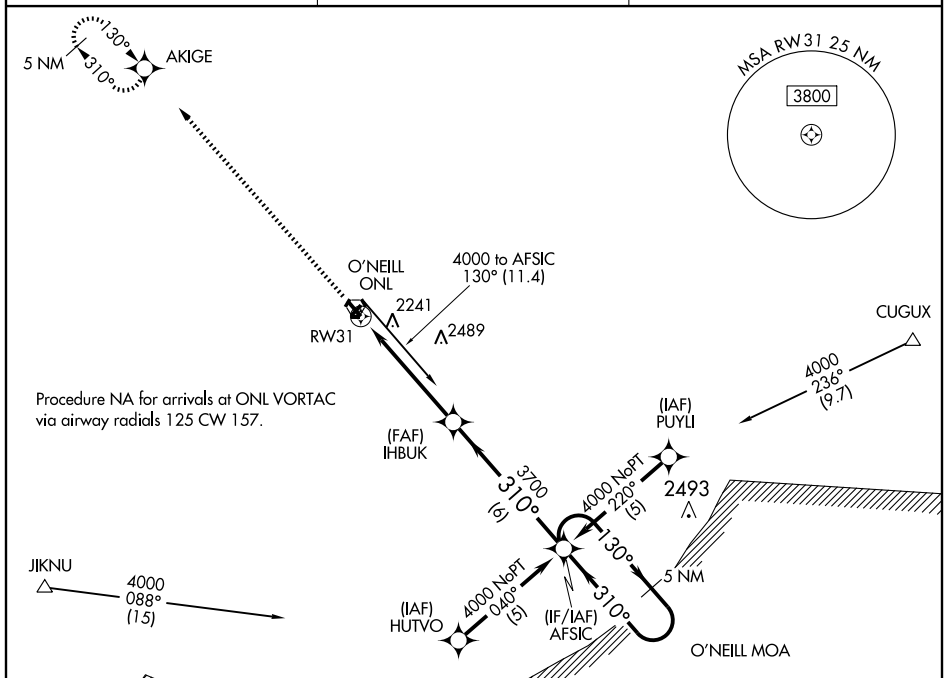
**⚠** If local altimeter setting not received, use Evelyn Sharp Field altimeter setting and increase all DAs 126 feet, all MDAs 140 feet. BARO-VNAV NA when using Evelyn Sharp Field altimeter setting. For uncompensated BARO-VNAV systems, LNAV/VNAV NA below -19°C (-2°F) or above 54°C (130°F). DME/DME RNP-0.3 NA. Visibility reduction by helicopters NA.

MISSED APPROACH: Climb to 4000 direct AKIGE and hold.

AWOS-3  
**121.125**

MINNEAPOLIS CENTER  
**128.0 385.5**

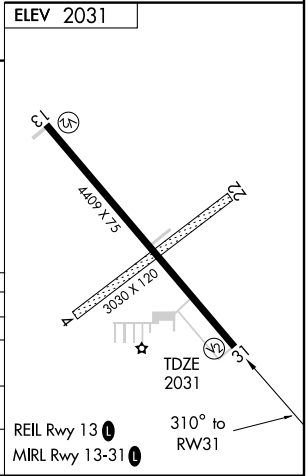
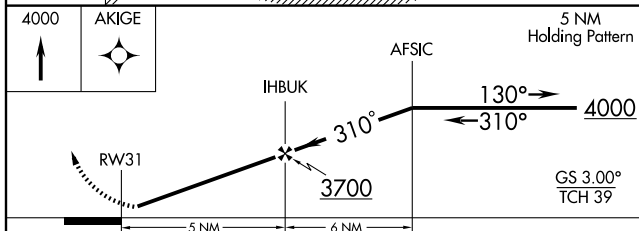
UNICOM  
**122.8 (CTAF) ①**



NC-2, 22 OCT 2009 to 19 NOV 2009

NC-2, 22 OCT 2009 to 19 NOV 2009

ELEV 2031



| CATEGORY     | A      | B           | C                       | D  |
|--------------|--------|-------------|-------------------------|----|
| LPV DA       | 2281-1 | 250 (300-1) |                         | NA |
| LNAV/VNAV DA | 2600-2 | 569 (600-2) |                         | NA |
| LNAV MDA     | 2580-1 | 549 (600-1) | 2580-1½<br>549 (600-1½) | NA |
| CIRCLING     | 2600-1 | 569 (600-1) | 2600-1½<br>569 (600-1½) | NA |

O'NEILL, NEBRASKA  
Amdt 1 08101

O'NEILL/ THE O'NEILL MUNI-JOHN L. BAKER FIELD (ONL)  
42°28' N-98°41' W

# RNAV (GPS) RWY 31