

# RNAV (GPS) RWY 13

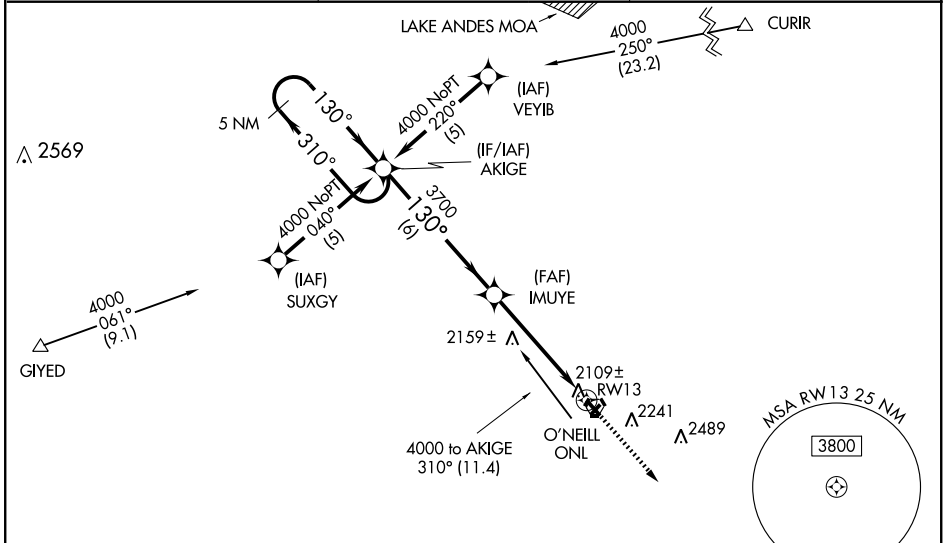
O'NEILL/ THE O'NEILL MUNI-JOHN L. BAKER FIELD (ONL)

WAAS CH <b>90203</b> <b>W13A</b>	APP CRS <b>130°</b>	Rwy Idg TDZE Apt Elev	<b>4409</b> <b>2031</b> <b>2031</b>
--	------------------------	-----------------------------	---

**⚠** BARO-VNAV NA when using Evelyn Sharp Field altimeter setting. For uncompensated BARO-VNAV systems, LNAV/VNAV NA below -19°C (-2°F) or above 54°C (130°F).  
**⚠** DME/DME RNP-0.3 NA. Visibility reduction by helicopters NA. If local altimeter setting not received, use Evelyn Sharp Field altimeter setting and increase all DAs 126 feet, all MDAs 140 feet. VDP NA when using Evelyn Sharp Field altimeter setting.

**MISSED APPROACH:**  
Climb to 4000 direct AFSIC and hold.

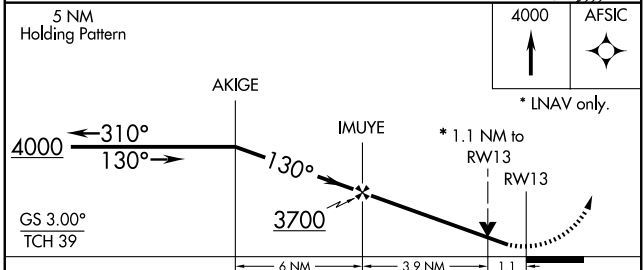
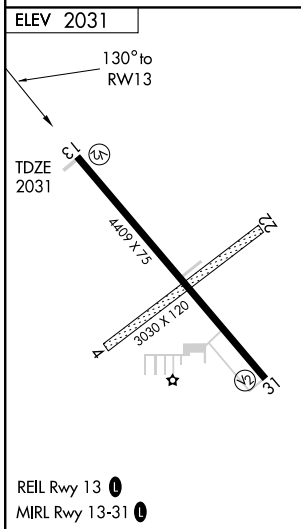
AWOS-3 <b>121.125</b>	MINNEAPOLIS CENTER <b>128.0 385.5</b>	UNICOM <b>122.8 (CTAF) 0</b>
--------------------------	--	---------------------------------



Procedure NA for arrivals at ONL VORTAC via V71 southeast bound.

NC-2, 22 OCT 2009 to 19 NOV 2009

NC-2, 22 OCT 2009 to 19 NOV 2009



CATEGORY	A	B	C	D
LPV DA		2307-1	276 (300-1)	NA
LNAV/VNAV DA		2379-1¼	348 (400-1¼)	NA
LNAV MDA		2420-1	389 (400-1)	NA
CIRCLING	2600-1	569 (600-1)	2600-1½ 569 (600-1½)	NA

# RNAV (GPS) RWY 13