

RNAV (GPS) RWY 1

SHELBYVILLE MUNI (GEZ)

| | | |
|------------------------|-----------------------------|---|
| APP CRS 009° | Rwy Idg TDZE Apt Elev | 5000 802 803 |
|------------------------|-----------------------------|---|

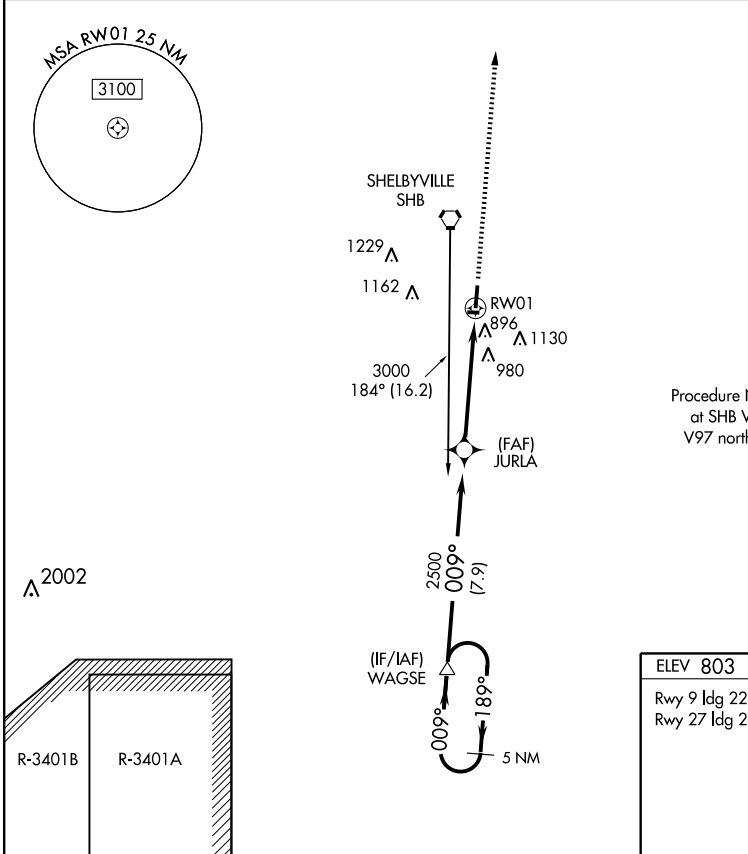
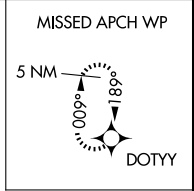
⚠ If local altimeter setting not received, use Indianapolis Intl altimeter setting and increase all MDAs 60 feet. VDP NA when using Indianapolis Intl altimeter setting.
⚠ DME/DME RNP-0.3 NA. Visibility reduction by helicopters NA.

MISSED APPROACH: Climb to 3000 direct DOTYY and hold.

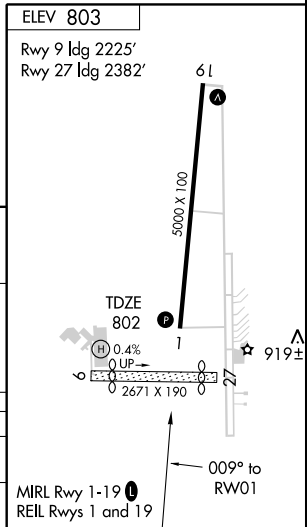
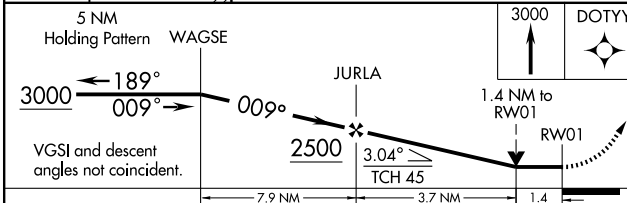
ASOS
121.55

INDIANAPOLIS APP CON
127.15 317.8

UNICOM
122.8 (CTAF) 0



Procedure NA for arrivals at SHB VORTAC via V97 northwest bound.



| CATEGORY | A | B | C | D |
|----------|--------------------|---|----------------------|----------------------|
| LNVA MDA | 1280-1 478 (500-1) | | 1280-1½ 478 (500-1½) | 1280-1½ 478 (500-1½) |
| CIRCLING | 1280-1 477 (500-1) | | 1280-1½ 477 (500-1½) | 1480-2¼ 677 (700-2¼) |

EC-2, 22 OCT 2009 to 19 NOV 2009

EC-2, 22 OCT 2009 to 19 NOV 2009