

VORTAC RZC 116.4 Chan 111	APP CRS 107°	Rwy Idg 3865 TDZE 1176 Apt Elev 1180
-----------------------------------------------	------------------------	-----------------------------------------------------------------

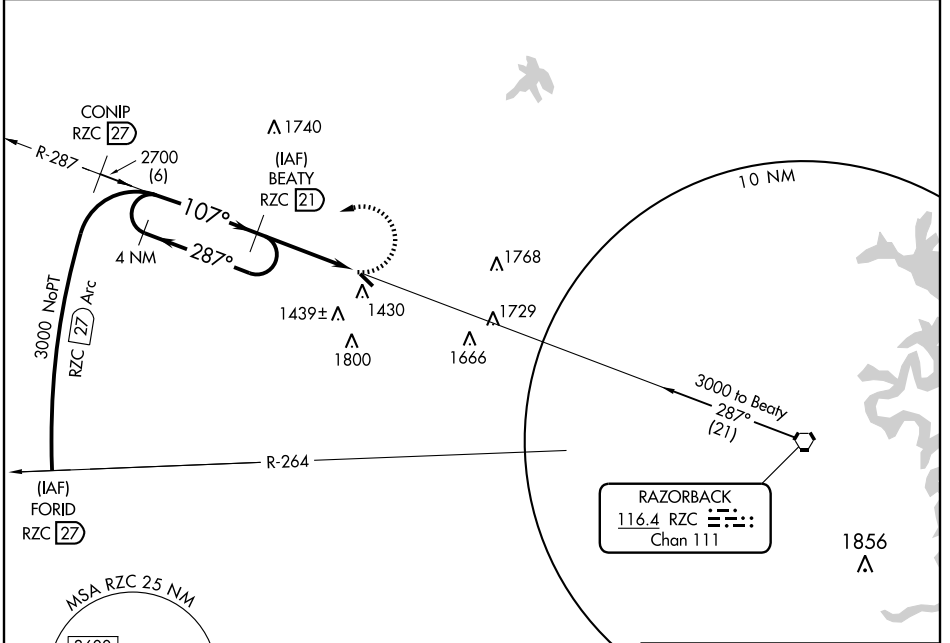
VOR/DME RWY 13

DECATUR/CRYSTAL LAKE (5M5)

▼ Use Fayetteville/Northwest Arkansas Rgnl altimeter setting; if not received, use Joplin, MO altimeter setting and increase all MDAs 120 feet.

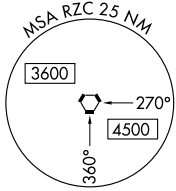
▲ NA MISSED APPROACH: Climbing left turn to 3000 via RZC R-287 to BEATY/21 DME and hold.

RAZORBACK APP CON * 121.0 244.57	CLNC DEL 121.725	UNICOM 122.8 (CTAF)
--------------------------------------------	----------------------------	-------------------------------

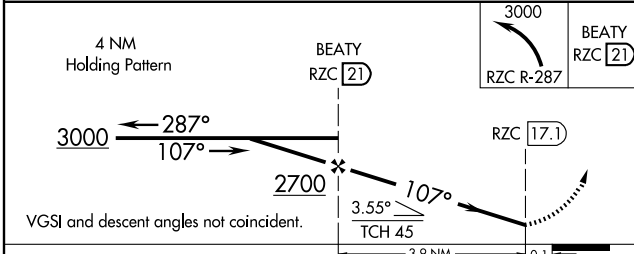


SC-1, 22 OCT 2009 to 19 NOV 2009

SC-1, 22 OCT 2009 to 19 NOV 2009



ELEV 1180
107° 4 NM from FAF
3000
BEATY RZC 21
TDZE 1176
RZC 17.1
307° UP
3865 X 75



CATEGORY	A	B	C	D
S-13	1780-1	604 (600-1)	1780-1¾ 604 (600-1¾)	NA
CIRCLING	1820-1	640 (700-1)	1860-2 680 (700-2)	NA

LIRL Rwy 13-31					
Knots	60	90	120	150	180
Min:Sec					