

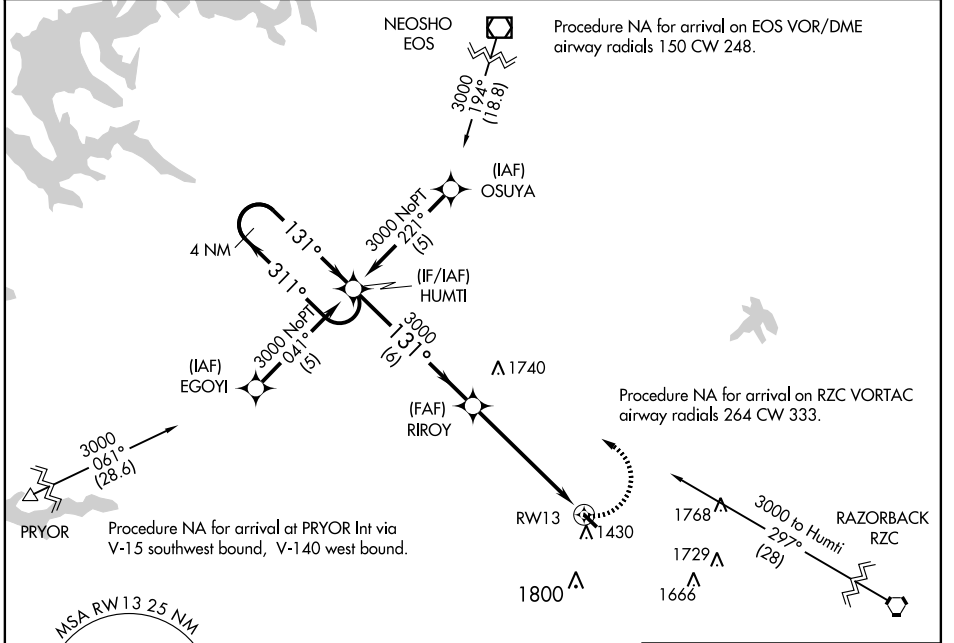
# RNAV (GPS) RWY 13

DECATUR/CRYSTAL LAKE (5M5)

APP CRS <b>131°</b>	Rwy Idg <b>3865</b> TDZE <b>1176</b> Apt Elev <b>1180</b>
------------------------	---

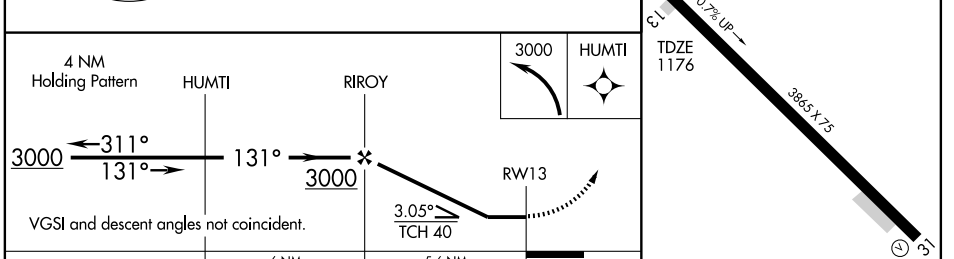
<p><b>▼</b> DME/DME RNP-0.3 NA <b>▲</b> NA Use Fayetteville/Northwest Arkansas Rgnl altimeter setting; if not received, use Joplin, MO altimeter setting and increase all MDAs 120 feet.</p>	<p>MISSED APPROACH: Climbing left turn to 3000 direct HUMTI WP and hold.</p>
--	--

<p>RAZORBACK APP CON * <b>121.0 244.57</b></p>	<p>CLNC DEL <b>121.725</b></p>	<p>UNICOM <b>122.8</b> (CTAF)</p>
--	------------------------------------	---------------------------------------



SC-1, 22 OCT 2009 to 19 NOV 2009

SC-1, 22 OCT 2009 to 19 NOV 2009



CATEGORY	A	B	C	D
LNVA MDA	1720-1	544 (600-1)	1720-1½ 544 (600-1½)	NA
CIRCLING	1820-1	640 (700-1)	1860-2 680 (700-2)	NA

