

RNAV (GPS) RWY 35

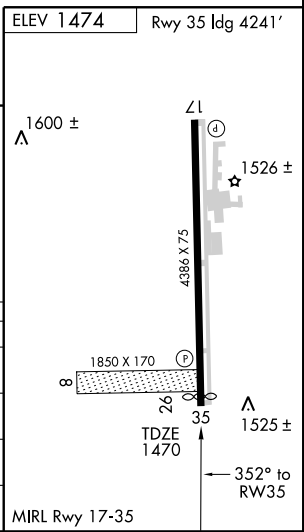
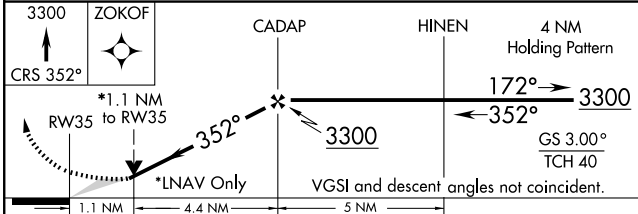
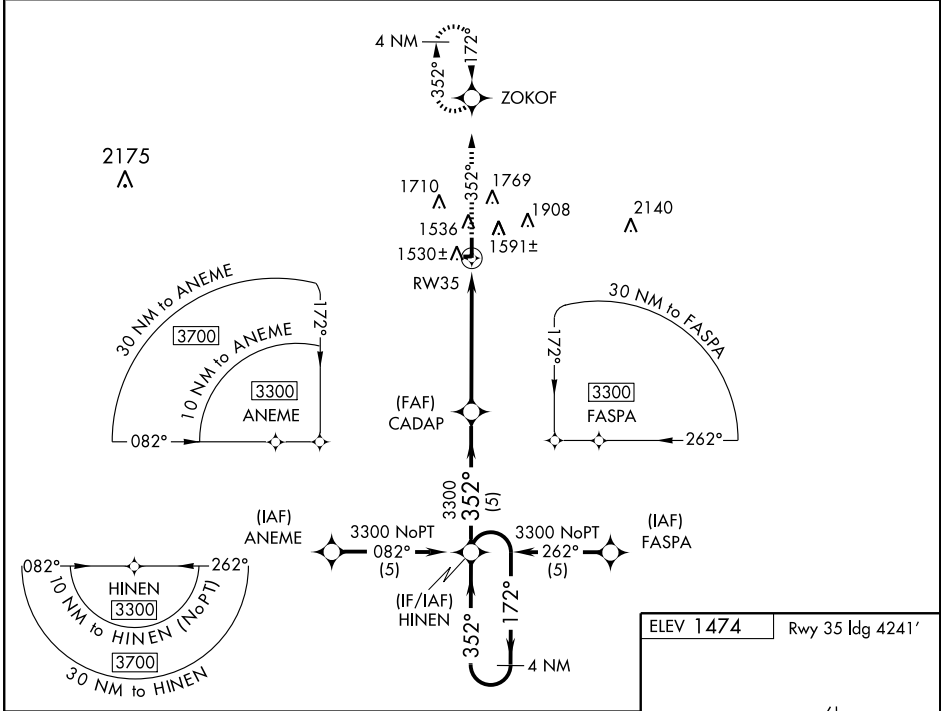
ALVA RGNL (AVK)

APP CRS 352°	Rwy Idg 4241
	TDZE 1470
	Apt Elev 1474

NA If local altimeter setting not received, use Enid altimeter setting and increase all MDAs 140 feet. When neither received, procedure NA. GPS or RNP-0.3 required. DME/DME RNP - 0.3 NA. BARO-VNAV NA below -17°C (+2°F). BARO-VNAV and VDP NA when using Enid altimeter setting.

MISSED APPROACH: Climb to 3300 via 352° course to ZOKOF WP and hold.

AWOS-3 121.125	VANCE APP CON* 119.775 378.8	UNICOM 122.8 (CTAF)
--------------------------	--	-------------------------------



CATEGORY	A	B	C	D
GLS PA DA	NA			
LNAV/VNAV DA	1840-1¼	370 (400-1¼)		NA
LNAV MDA	1840-1	370 (400-1)		NA
CIRCLING	1960-1¼ 486 (500-1¼)	2120-1¼ 646 (700-1¼)	2120-1¼ 646 (700-1¼)	NA

SC-1, 22 OCT 2009 to 19 NOV 2009

SC-1, 22 OCT 2009 to 19 NOV 2009