

MANNING, SOUTH CAROLINA

AL-5510 (FAA)

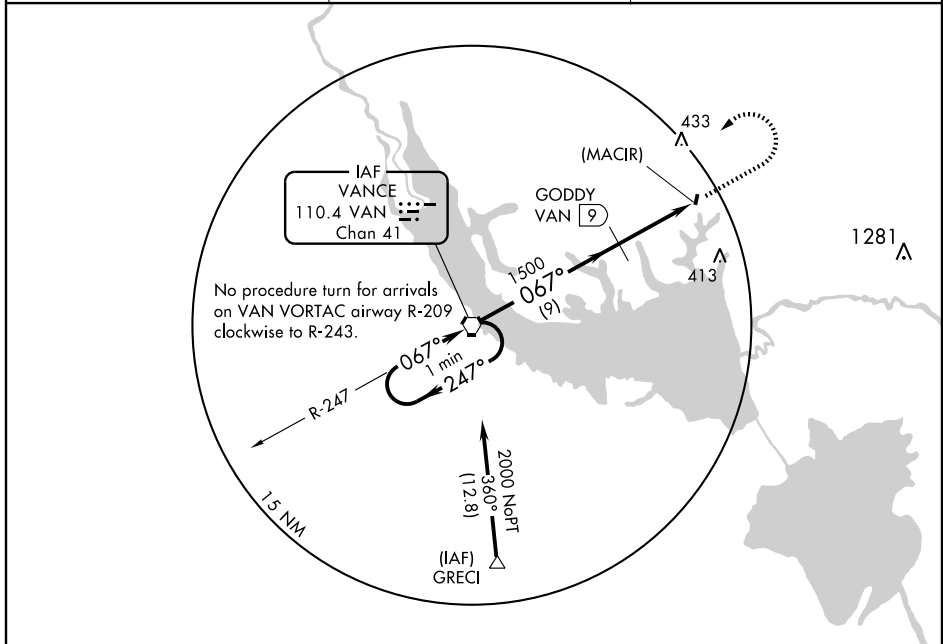
VORTAC VAN <b>110.4</b> Chan 41	APP CRS <b>067°</b>	Rwy Idg TDZE Apt Elev	N/A N/A 104
---------------------------------------	------------------------	-----------------------------	-------------------

# VOR/DME or GPS-A

MANNING/SANTEE COOPER RGNL (MINI)

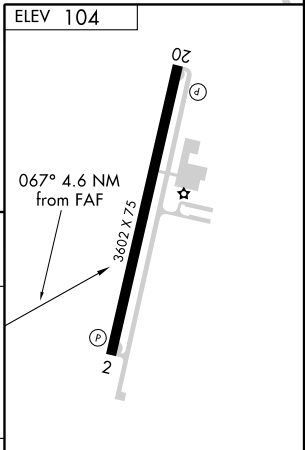
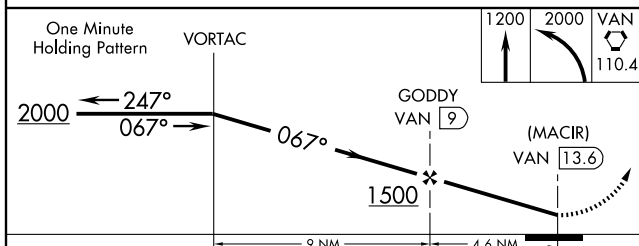
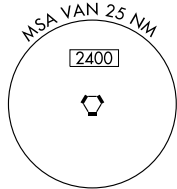
<p>Use Florence altimeter setting.</p>	<p>MISSED APPROACH: Climb to 1200 then climbing left turn to 2000 direct VAN VORTAC and hold.</p>
--	---

AWOS-3 <b>120.175</b>	SHAW APP CON* <b>125.4 285.4</b>	UNICOM <b>122.8 (CTAF)</b>
--------------------------	-------------------------------------	-------------------------------



SE-2, 22 OCT 2009 to 19 NOV 2009

SE-2, 22 OCT 2009 to 19 NOV 2009



CATEGORY	A	B	C	D
CIRCLING	660-1	556 (600-1)	660-1½ 556 (600-1½)	660-2 556 (600-2)

MIRL Rwy 2-20

MANNING, SOUTH CAROLINA  
Amdt 4 09295

33° 35' N - 80° 13' W

# VOR/DME or GPS-A