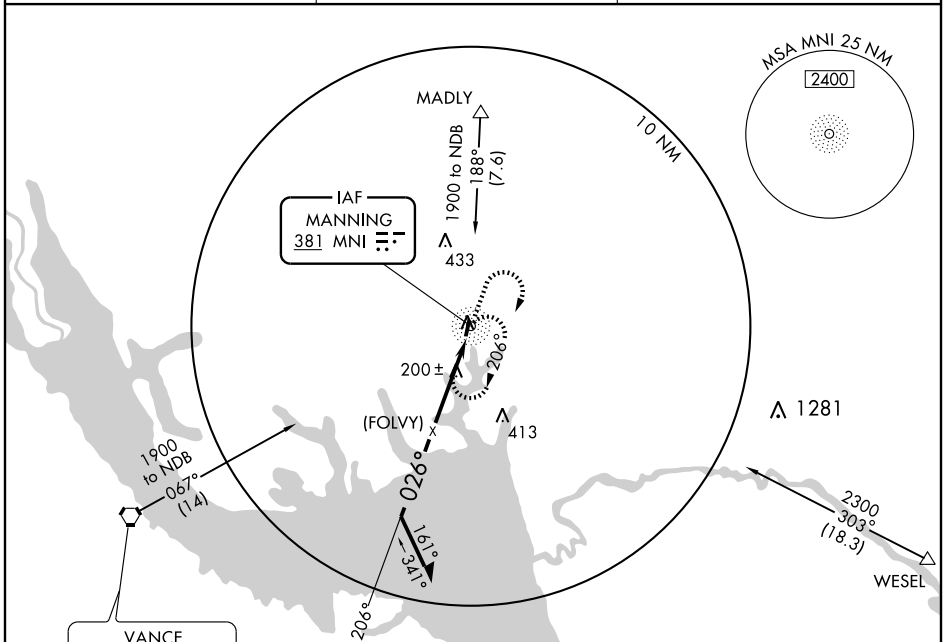


NDB MNI <b>381</b>	APP CRS <b>026°</b>	Rwy Idg TDZE Apt Elev	<b>3602</b> <b>102</b> <b>104</b>
-----------------------	------------------------	-----------------------------	---

**NDB or GPS RWY 2**  
MANNING/SANTEE COOPER RGNL (MNI)

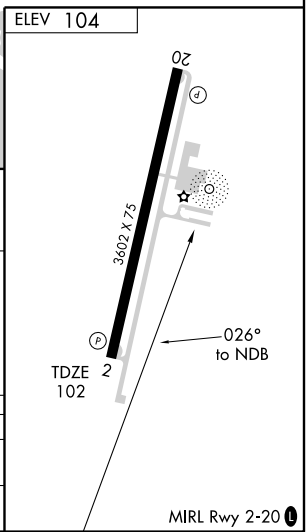
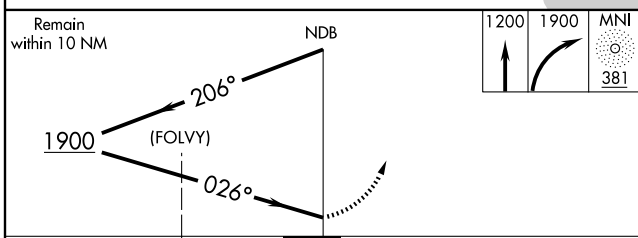
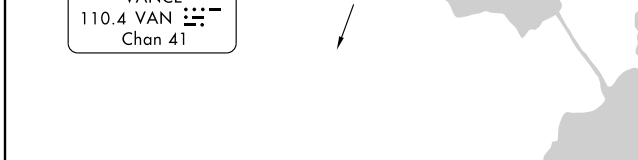
<p>▼ ▲ NA</p> <p>Use Florence altimeter setting.</p>	<p>MISSED APPROACH: Climb to 1200 then climbing right turn to 1900 direct MNI NDB and hold.</p>
--	---

AWOS-3 <b>120.175</b>	SHAW APP CON★ <b>125.4 285.4</b>	UNICOM <b>122.8 (CTAF) 0</b>
--------------------------	-------------------------------------	---------------------------------



SE-2, 22 OCT 2009 to 19 NOV 2009

SE-2, 22 OCT 2009 to 19 NOV 2009



CATEGORY	A	B	C	D
S-2	660-1 558 (600-1)		660-1½ 558 (600-1½)	660-1¾ 558 (600-1¾)
CIRCLING	660-1 556 (600-1)		660-1½ 556 (600-1½)	660-2 556 (600-2)