

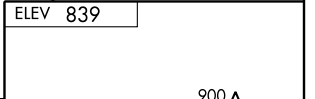
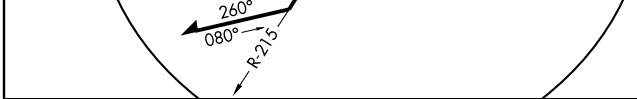
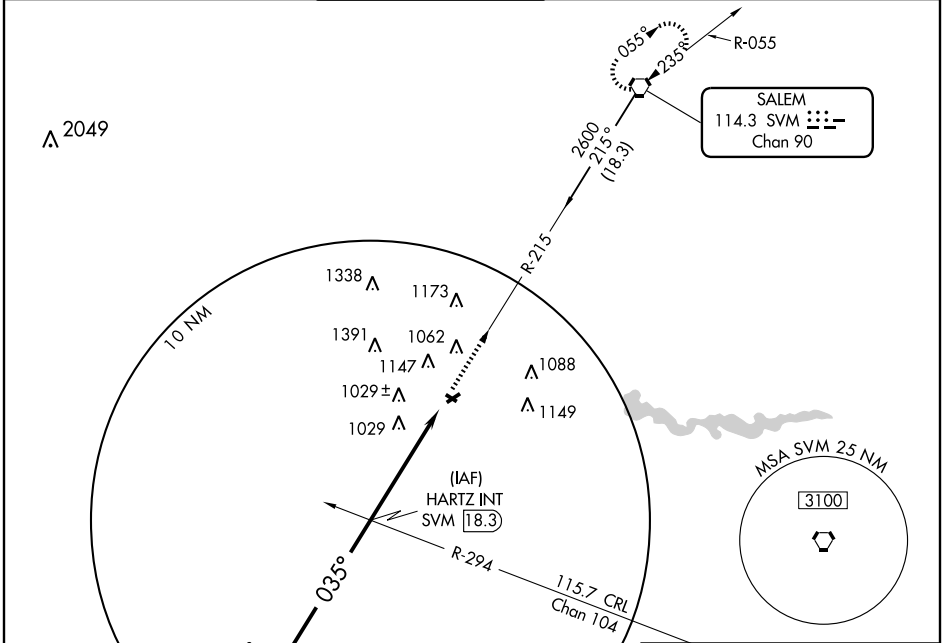
# VOR RWY 6

ANN ARBOR MUNI (A.R.B.)

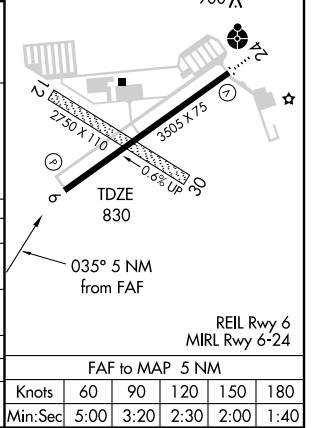
VORTAC SVM <b>114.3</b> Chan <b>90</b>	APP CRS <b>035°</b>	Rwy Idg TDZE Apt Elev	<b>3505</b> <b>830</b> <b>839</b>
--	------------------------	-----------------------------	---

**⚠** When control tower closed, use Detroit Willow Run altimeter setting. MISSED APPROACH: Climb to 3000 direct SVM VORTAC and hold.

ATIS <b>134.55</b>	DETROIT APP CON <b>118.95 363.2</b>	<b>ANN ARBOR TOWER *</b> <b>120.3 (CTAF) 0</b>	GND CON <b>121.6</b>	CLNC DEL <b>121.6</b>	UNICOM <b>123.0</b>
-----------------------	--	---	-------------------------	--------------------------	------------------------



CATEGORY	A	B	C	D
S-6	1320-1	490 (500-1)	1320-1¼ 490 (500-1¼)	1320-1½ 490 (500-1½)
CIRCLING	1500-1	661 (700-1)	1500-1¾ 661 (700-1¾)	1500-2 661 (700-2)
WILLOW RUN ALTIMETER SETTING MINIMUMS				
S-6	1340-1	510 (600-1)	1340-1½	510 (600-1½)
CIRCLING	1520-1	681 (700-1)	1520-2 681 (700-2)	1520-2¼ 681 (700-2¼)



EC-1, 22 OCT 2009 to 19 NOV 2009

EC-1, 22 OCT 2009 to 19 NOV 2009

FAF to MAP 5 NM					
Knots	60	90	120	150	180
Min:Sec	5:00	3:20	2:30	2:00	1:40