

ANN ARBOR, MICHIGAN

AL-5506 (FAA)

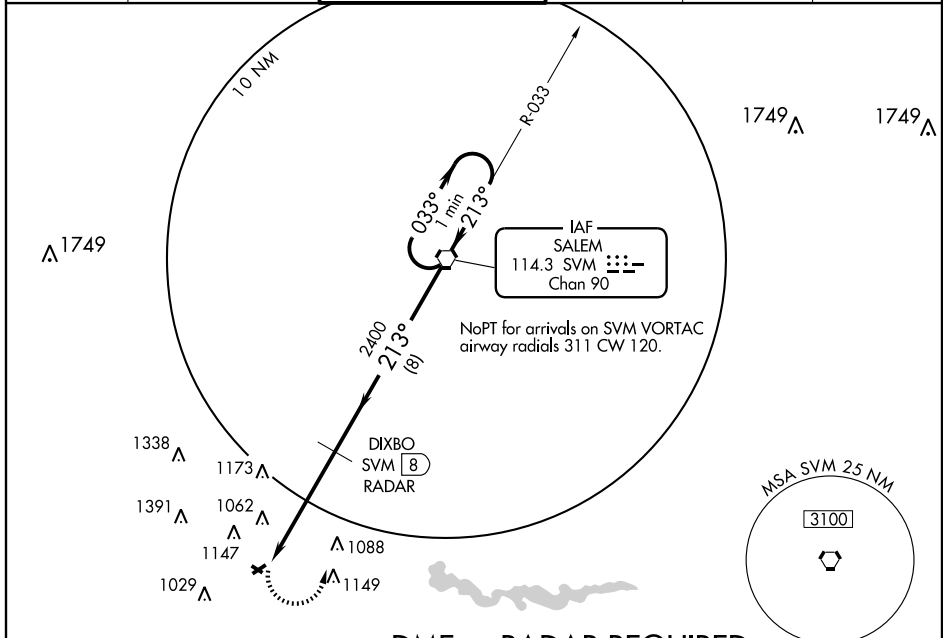
VORTAC SVM 114.3 Chan 90	APP CRS 213°	Rwy Ldg TDZE Apt Elev	3505 830 839
--	------------------------	-----------------------------	---

VOR RWY 24

ANN ARBOR MUNI (A.R.B)

<p>▼ Inoperative table does not apply. When control tower closed, use Detroit Willow Run altimeter setting.</p> <p>▲</p>	<p>ODALS</p>	<p>MISSED APPROACH: Climbing left turn to 3000 direct SVM VORTAC and hold.</p>
--	--------------	--

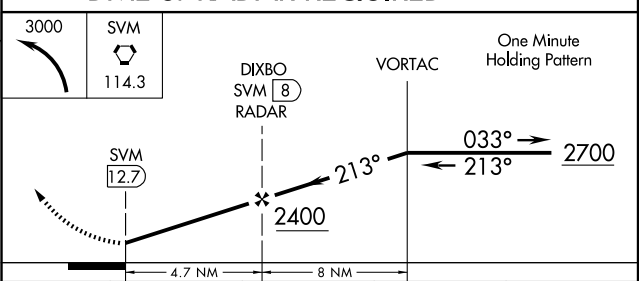
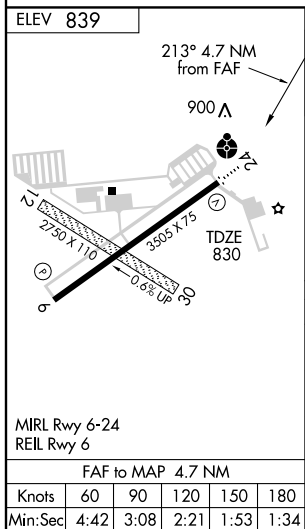
ATIS 134.55	DETROIT APP CON 118.95 363.2	ANN ARBOR TOWER * 120.3 (CTAF) 0	GND CON 121.6	CLNC DEL 121.6	UNICOM 123.0
-----------------------	--	--	-------------------------	--------------------------	------------------------



EC-1, 22 OCT 2009 to 19 NOV 2009

EC-1, 22 OCT 2009 to 19 NOV 2009

DME or RADAR REQUIRED



CATEGORY	A	B	C	D
S-24	1460-1	630 (700-1)	1460-1¾ 630 (700-1¾)	1460-2 630 (700-2)
CIRCLING	1500-1	661 (700-1)	1500-1¾ 661 (700-1¾)	1500-2 661 (700-2)
WILLOW RUN ALTIMETER SETTING MINIMUMS				
S-24	1480-1	650 (700-1)	1480-1¾ 650 (700-1¾)	1480-2 650 (700-2)
CIRCLING	1520-1	681 (700-1)	1520-2 681 (700-2)	1520-2½ 681 (700-2½)

ANN ARBOR, MICHIGAN
Amdt 13A 07354

42°13'N - 83°45'W

ANN ARBOR MUNI (A.R.B)

VOR RWY 24