

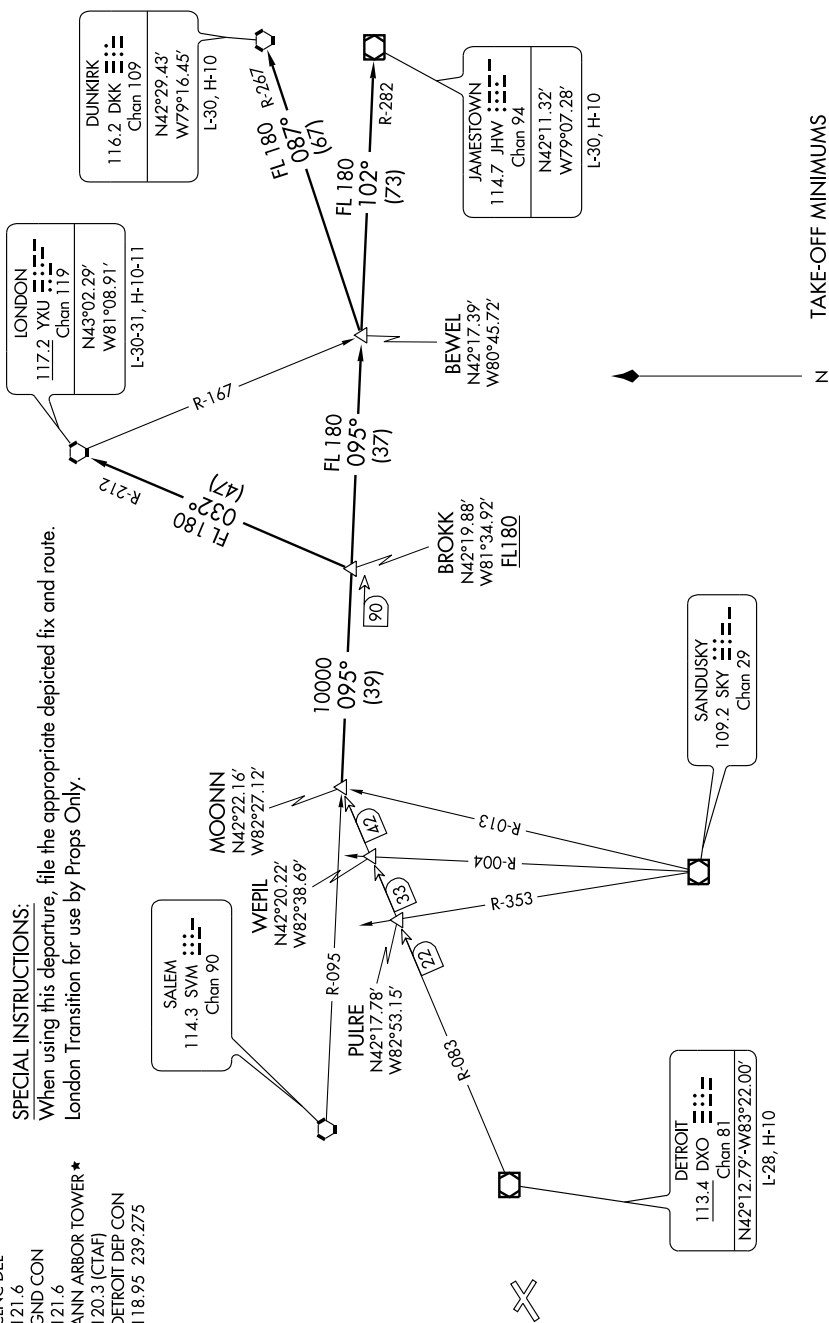
EC-1, 22 OCT 2009 to 19 NOV 2009

ATIS 134.55
CLNC DEL
121.6
GND CON
121.6
ANN ARBOR TOWER ★
120.3 (CTAF)
DETROIT DEP CON
118.95 239.275

SPECIAL INSTRUCTIONS:

When using this departure, file the appropriate depicted fix and route.
London Transition for use by Props Only.

NOTE: Chart not to scale.



NOTE: RADAR Required.

(NARRATIVE ON FOLLOWING PAGE)

TAKE-OFF MINIMUMS

Rwys 12, 30: NA - Environmental.
Rwys 6, 24: STANDARD.

EC-1, 22 OCT 2009 to 19 NOV 2009